

# BATHSENSE canvas

BATHSENSE  
CANVAS | ap asianpaints



Scan here to visit our website



Asian Paints Limited, Asian Paints House, 6A,  
Shantinagar, Santacruz (E), Mumbai - 400 055,  
India. Tel: 022 - 3981 8000, Fax: 022 - 3981 8888

Toll-free number  
1800-266-2079



November 2023



November 2023

# Design with Canvas


While colour has the power to create mood and redefine space, texture brings alive a feeling, completing the whole experience; bringing it alive.

Now, take your bathroom design to the next level of sophistication and style with the BathSense Canvas Luxury Collection.

An avant-garde approach to bathroom interiors. This luxurious colour-coordinated range brings together sanitaryware, vanities, CP fittings, and tiles by leading architects, interior designers, and technical experts.

Choose from an array of stimulating, colour-based finishes that will elevate any design theme while protecting and extending the life of your bathroom fittings. Think matte, glossy, smooth or rustic. Use colour and finish to complement your bathroom size and dimensions, taking into account trend, theme, lighting, durability, other, and specific preferences.

Brought to you by Asian Paints  
Bathsense, the Canvas luxury collection is available in associated showrooms across India, and showcases the future in bathroom décor.



“In a way, the blank canvas represents the infinity of trying to use colour to express emotions - to assign a linguistic function to colour.”

- Guido Molinari

# Magnetic Monochrome

Never underestimate the confidence of simplicity. The minimalism of monochromatic decor is strikingly bold, and complements any theme from traditional to ultra modern.

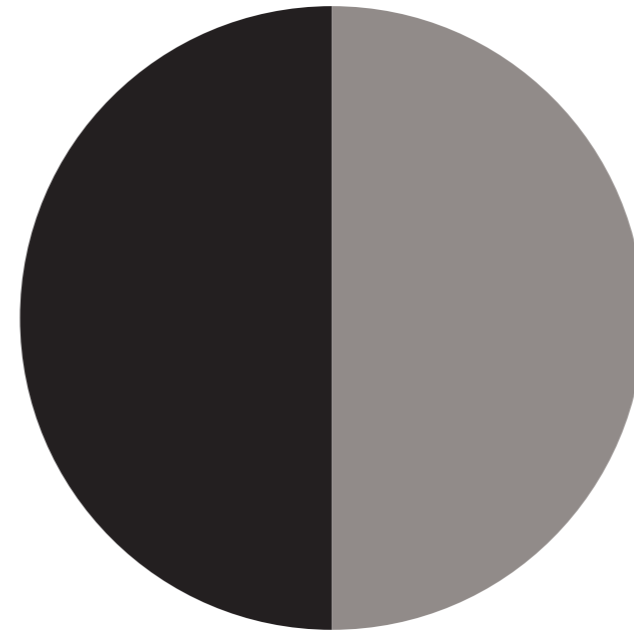
Single colour styling easily makes any space look professional and offers the flexibility to work with varying contrasts. In fact, with varying textures and tones to play with, there's nothing muted or monotonous about this effect. Especially when it comes to making smaller spaces appear larger, you can't go wrong with this look.



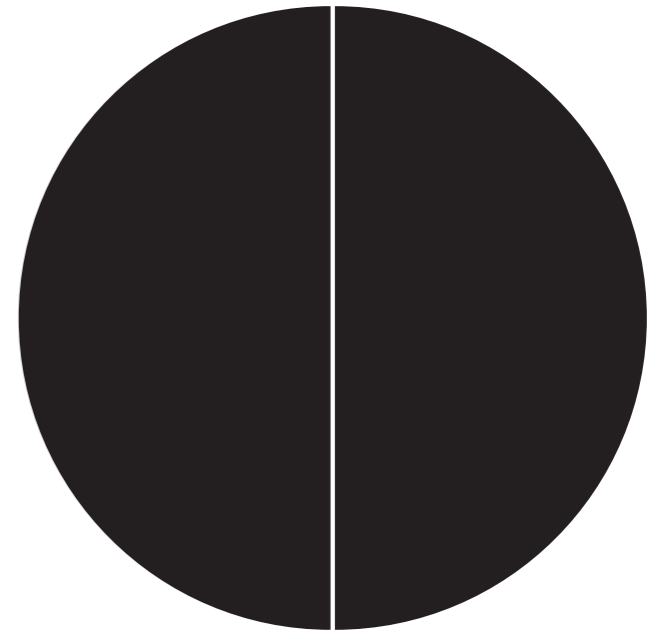




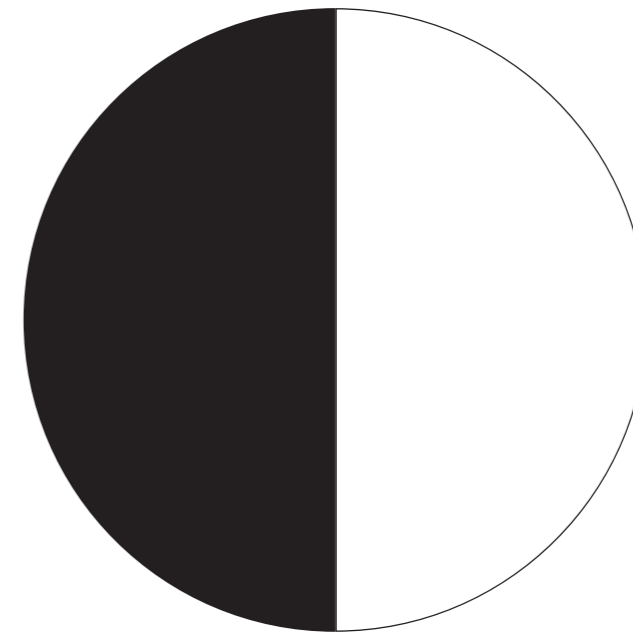
Customise a combination  
to suit your style



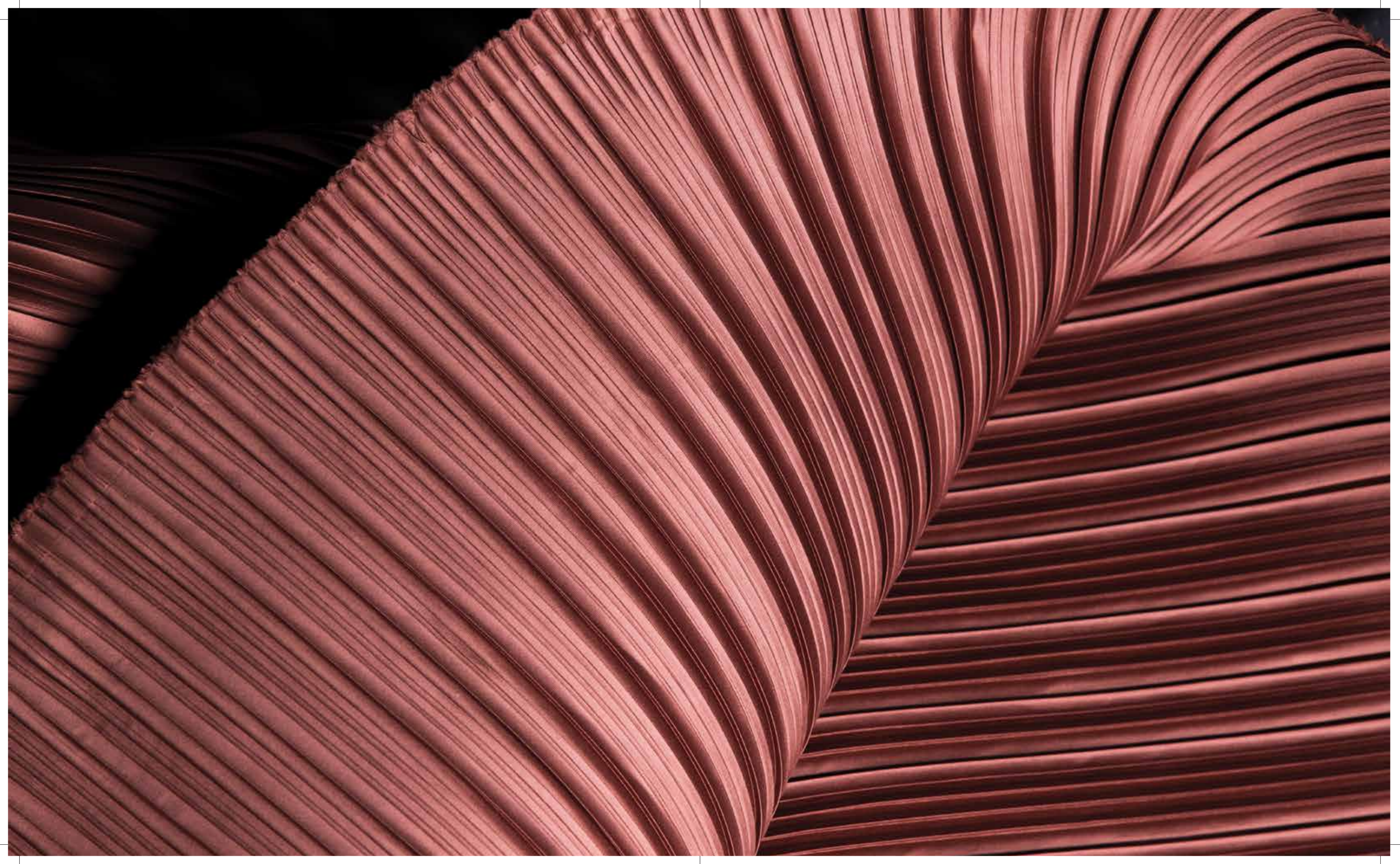
Faucets | Ceramics



Faucets | Ceramics



Faucets | Ceramics





# Rose Blush

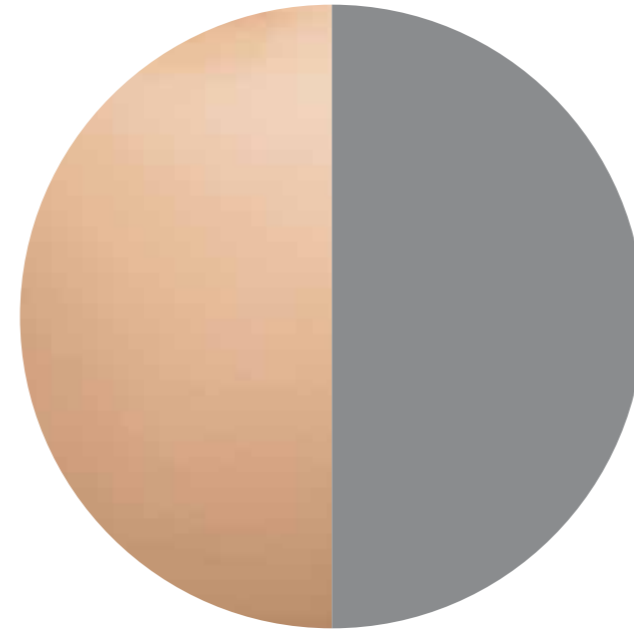
Often called the 'new neutral', Rose Gold has an allure that is undeniable; a perfect balance of opulence and comfort. This rare metallic that began as a colour trend is now here to stay.

Naturally ethereal, Rose Gold lends itself to a range of design themes from vintage, retro to cosmopolitan, natural, and even bohemian. Emerging from rich palettes like blush pink, warm copper and gold glow, it offers a finish that is universally flattering. Rose Gold says that you are fashion-forward, and you care about aesthetics. What makes this tone so loved and enduring, is its effortless sense of luxury.

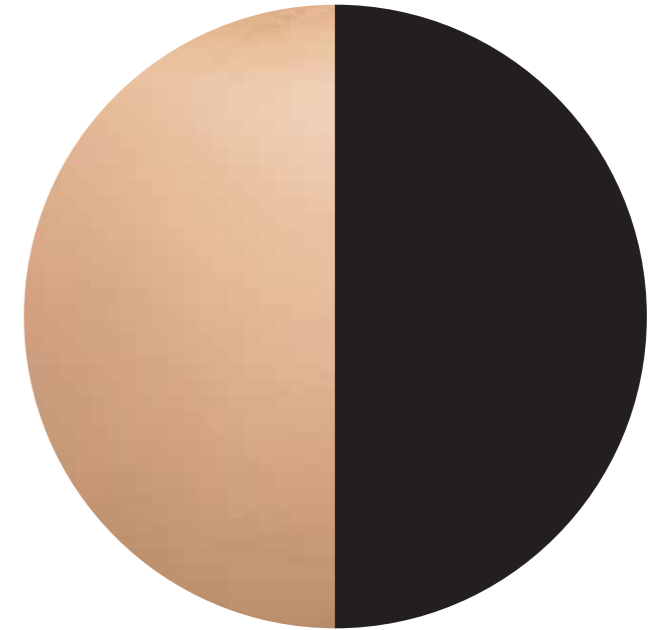




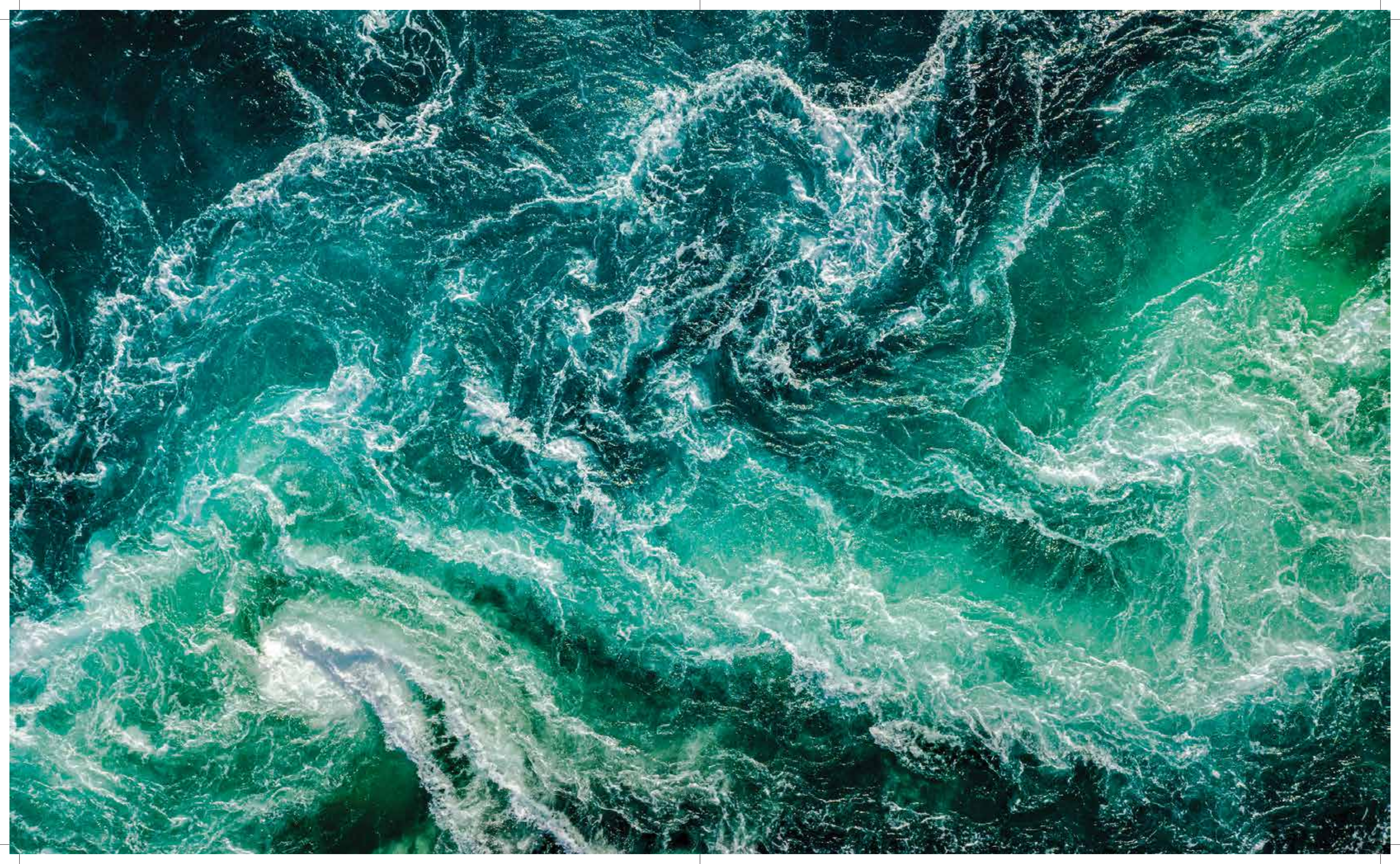
Customise a combination  
to suit your style



Faucets | Ceramics



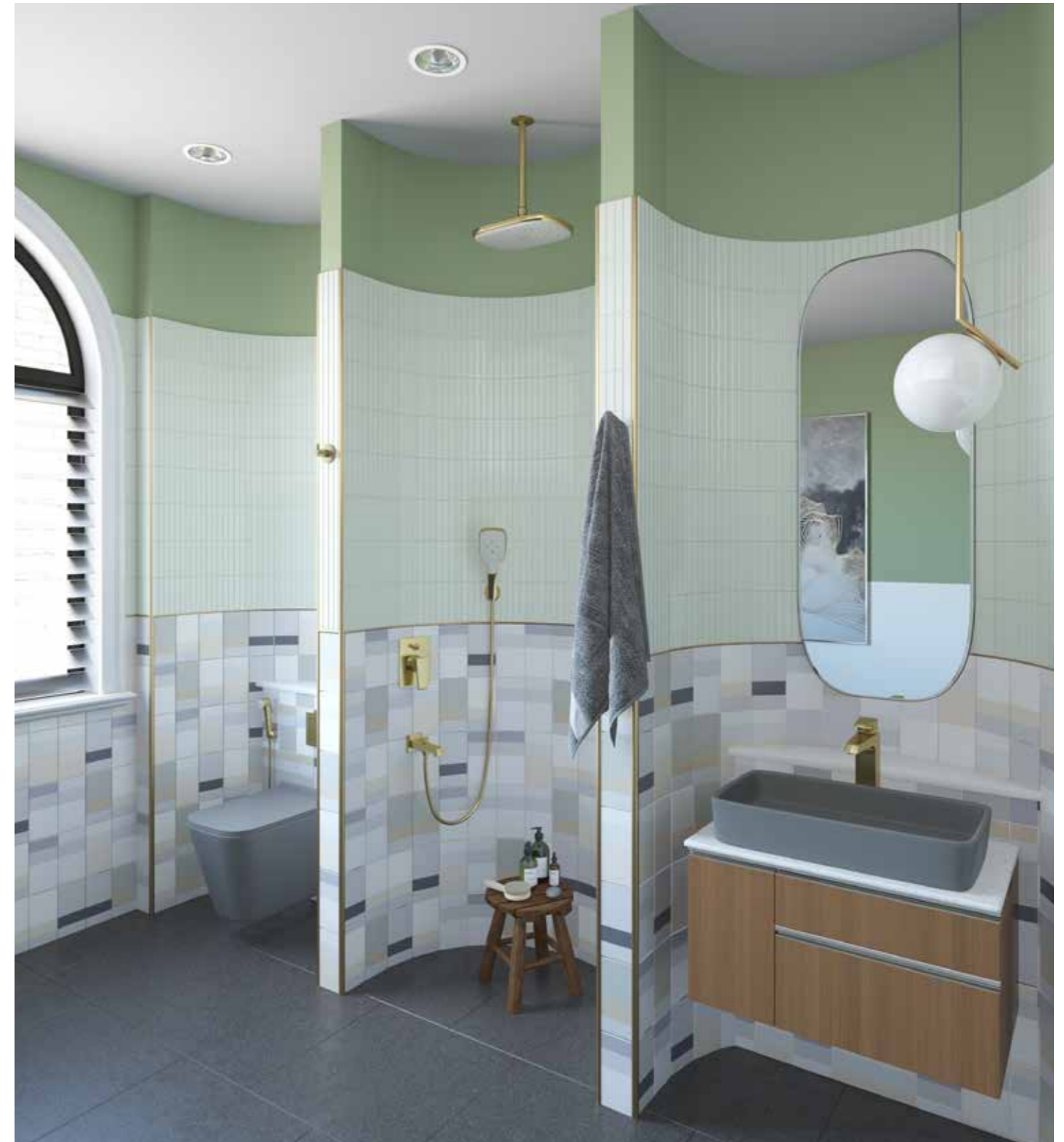
Faucets | Ceramics



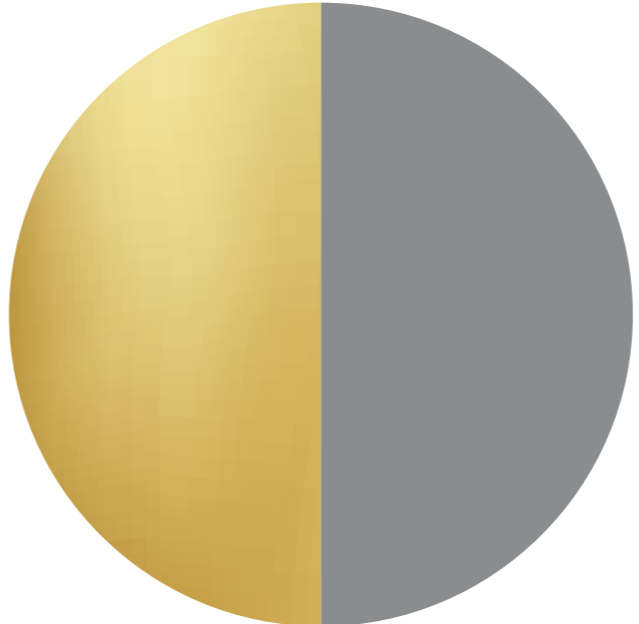
# Earl Grey

Grey comes with the advantage of being both a neutral as well as an accent, making it a versatile and increasingly popular interior design choice.

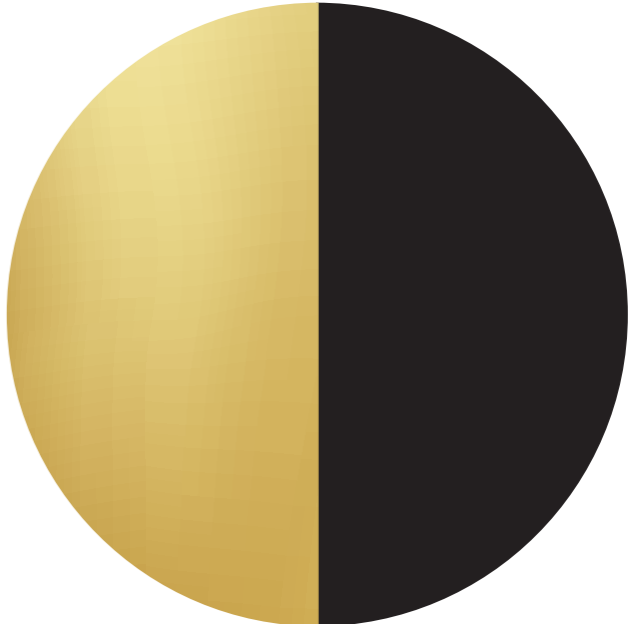
This colour palette brings calmness, elegance and stability, and works well with traditional and contemporary themes. Ranging from cool shades of pebble and stone to deep charcoal and slate, any avatar of grey can add stateliness to your space.



Customise a combination  
to suit your style



Faucets | Ceramics



Faucets | Ceramics





# Red Rapture

This is a power colour. Where there is red, there is passion for style, and life.

Just a hint of red is enough to bring in an element of surprise and thrill. That's what makes this finish so great. It's bold, adventurous, and sure to stand out against any backdrop.

Whether it is crimson bright or mature merlot, any shade of red can add warmth and drama to your space.







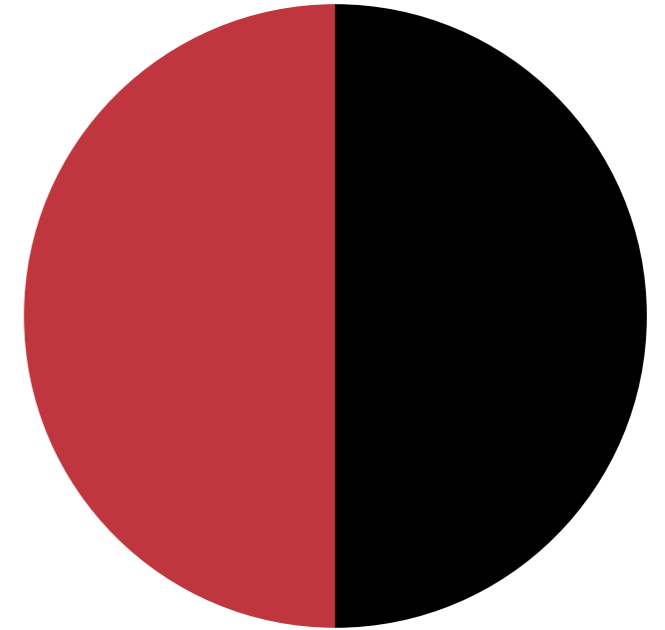


Red Rapture

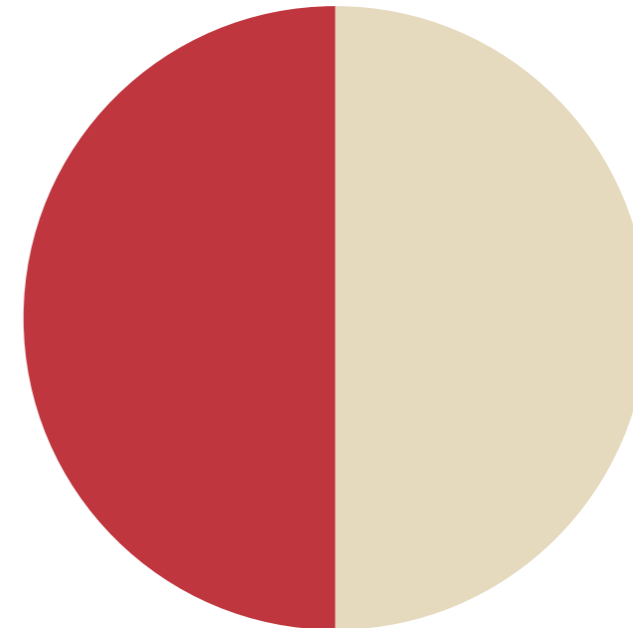
Customise a combination  
to suit your style



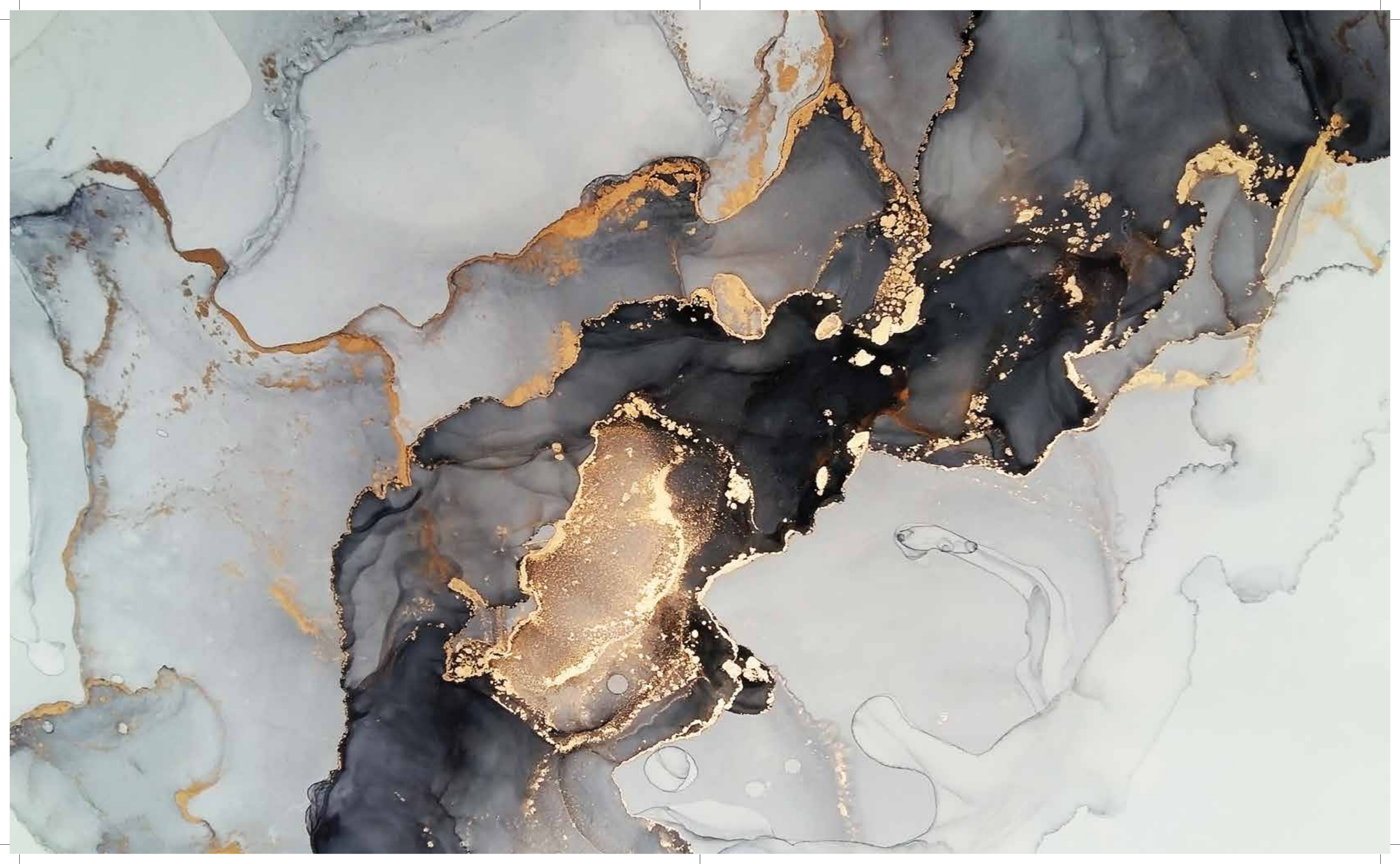
Faucets | Ceramics



Faucets | Ceramics



Faucets | Ceramics

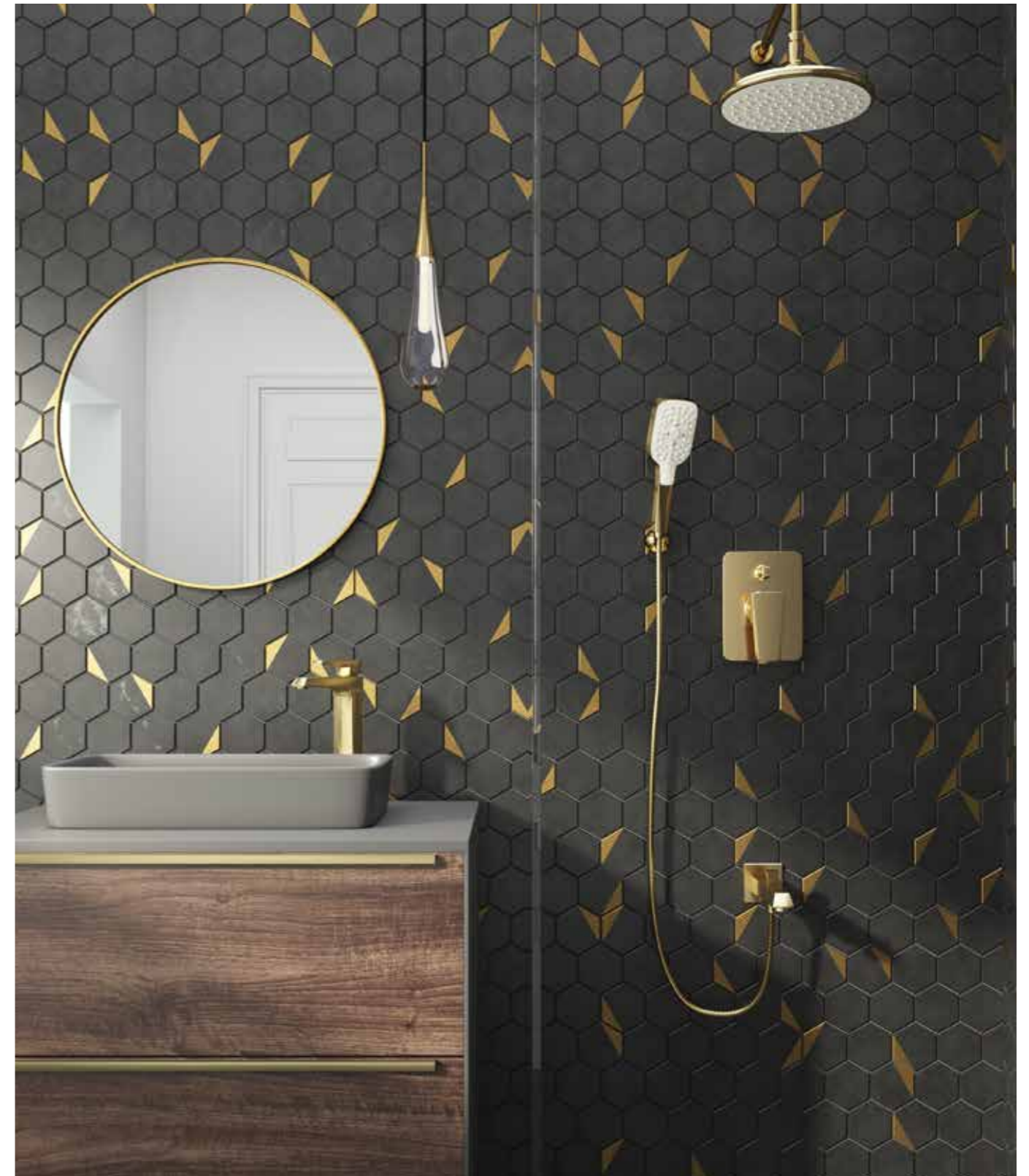


# Midas Touch



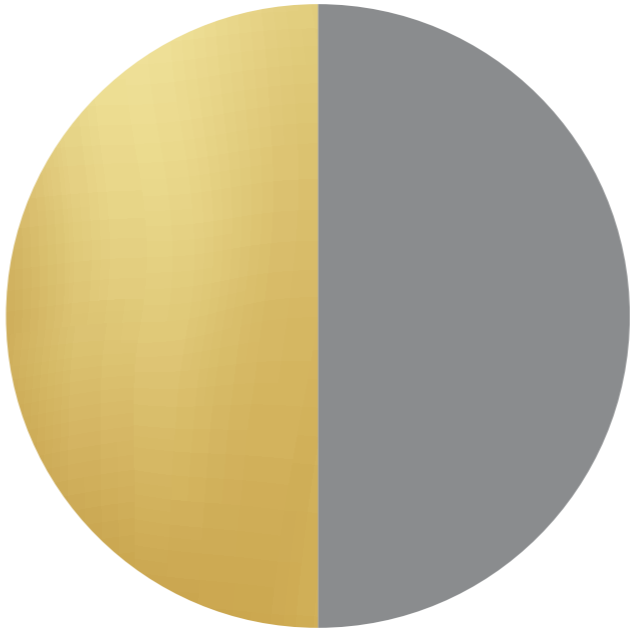
Nothing says luxury like the colour gold. Even the slightest hint of this tint can make a grand statement. That's the influence of this opulent finish.

Both timeless and trendy, the glamour of this metallic beauty brings both richness and warmth to any bathroom theme. By the very nature of its decadence, gold is sure to add depth and presence to your space.

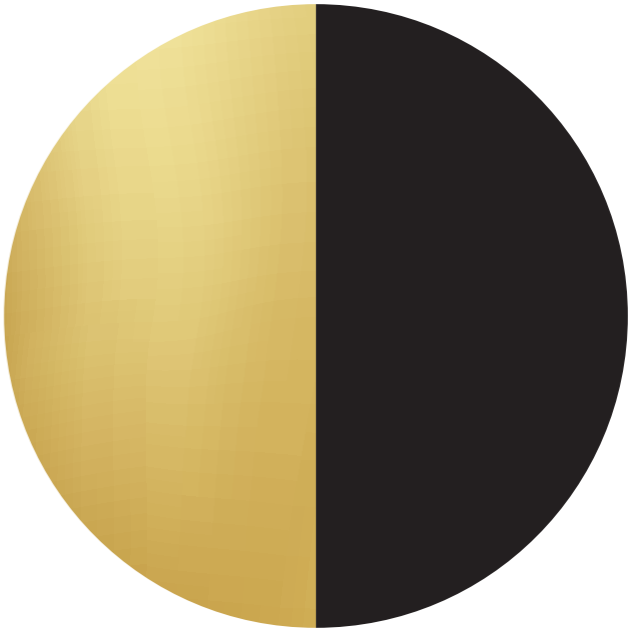




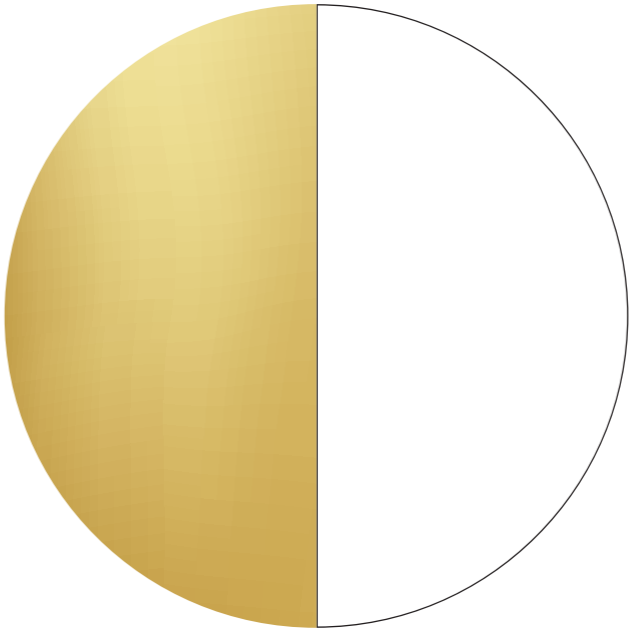
Customise a combination  
to suit your style



Faucets | Ceramics

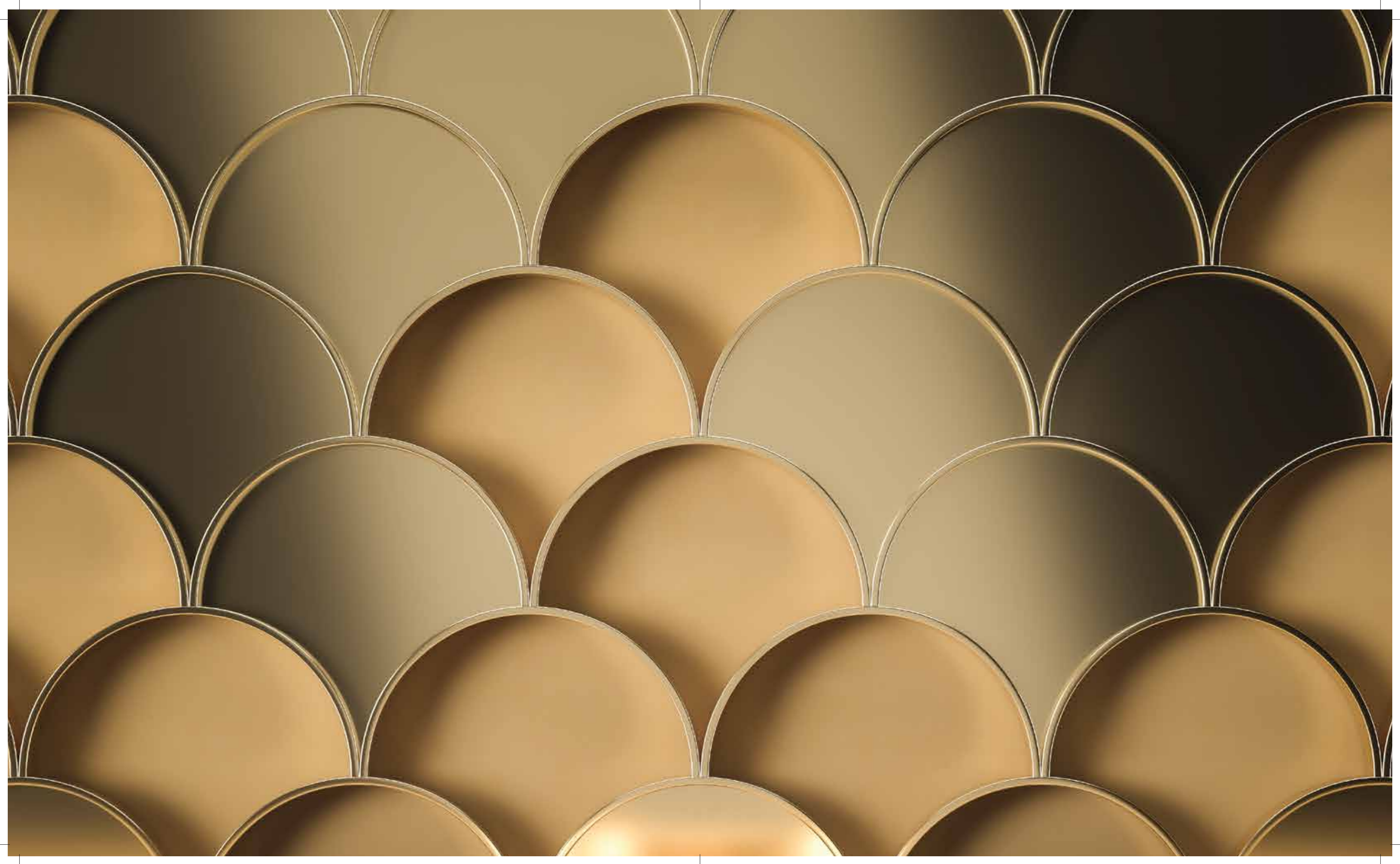


Faucets | Ceramics



Faucets | Ceramics









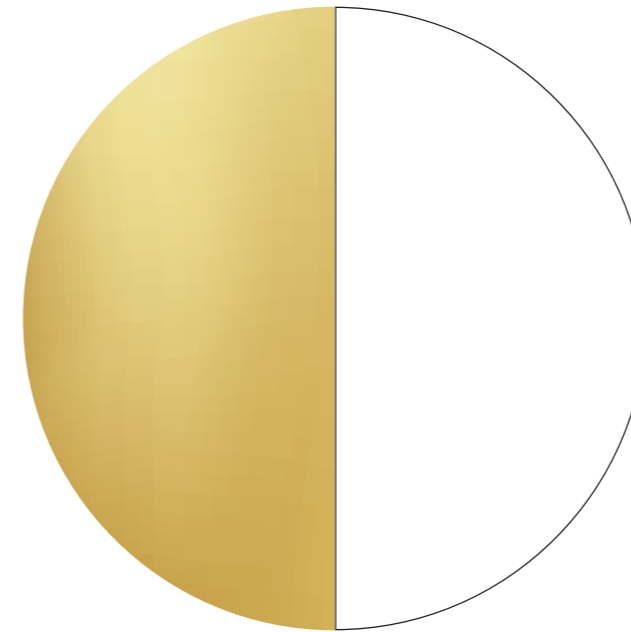
# Golden Sands

When it comes to colours, you can't get a more trusted friend than beige. Going from classic creams to comforting taupes, earthy sands to exquisite golds, this classic, dependable tone is equally versatile, and neutral enough to get along with a wide range of design themes and shades.

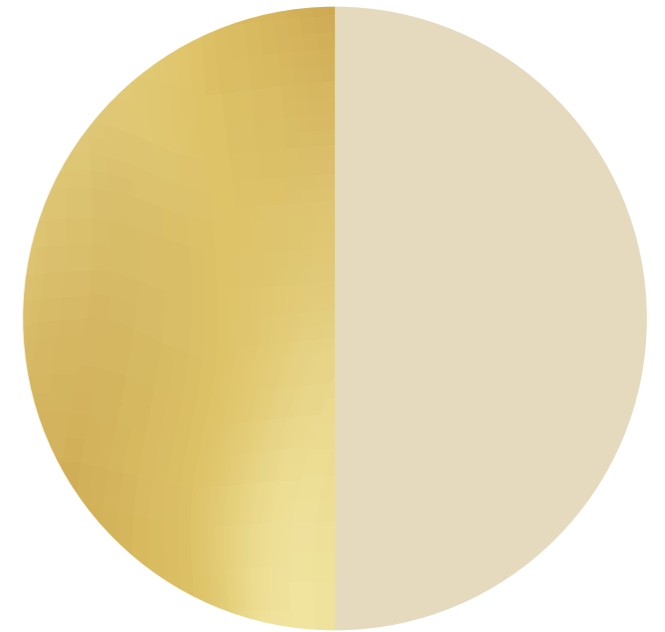
As a finish, it brings the warmth of brown as well as the cool elegance of white; and evokes an equally vast range of moods that are both calming, and sophisticated.



Customise a combination  
to suit your style



Faucets | Ceramics



Faucets | Ceramics

# LOTUS 25

HYDROPHOBIC TECHNOLOGY

## Benefits

Hydrophobic' or water-repellent coating used on the faucets in Canvas collection have a higher contact angle as compared to equivalent chrome-plated brass faucets. This results in a higher tendency to repel water from the surface of the faucet, leading to the following benefits:



### Prevents hard water scaling and spots

The water repellent property of the coating reduces water sticking on the surface. Making the coated faucets less prone to scale build-up caused by hard water. The hydrophobic coating seals the weak spots on the surface, sensitive to corrosion. Therefore, the faucet will be more resistant to peel-offs, stains etc. induced by hard water.



### Higher corrosion resistance for long-lasting beauty

Hydrophobic coating protects the overall faucet and the weak spots sensitive to corrosion. Corrosive species like chemicals and salts cannot easily penetrate through the coating, thereby preventing corrosion for longer time. The coating is also tolerant to soap solutions and mild detergents\*. They will therefore have a higher durability under extreme water and environmental conditions. Coated products can withstand CASS test duration which is greater than 3 times of the industry standard of 48 hours.



### Easy to remove germs from the surface

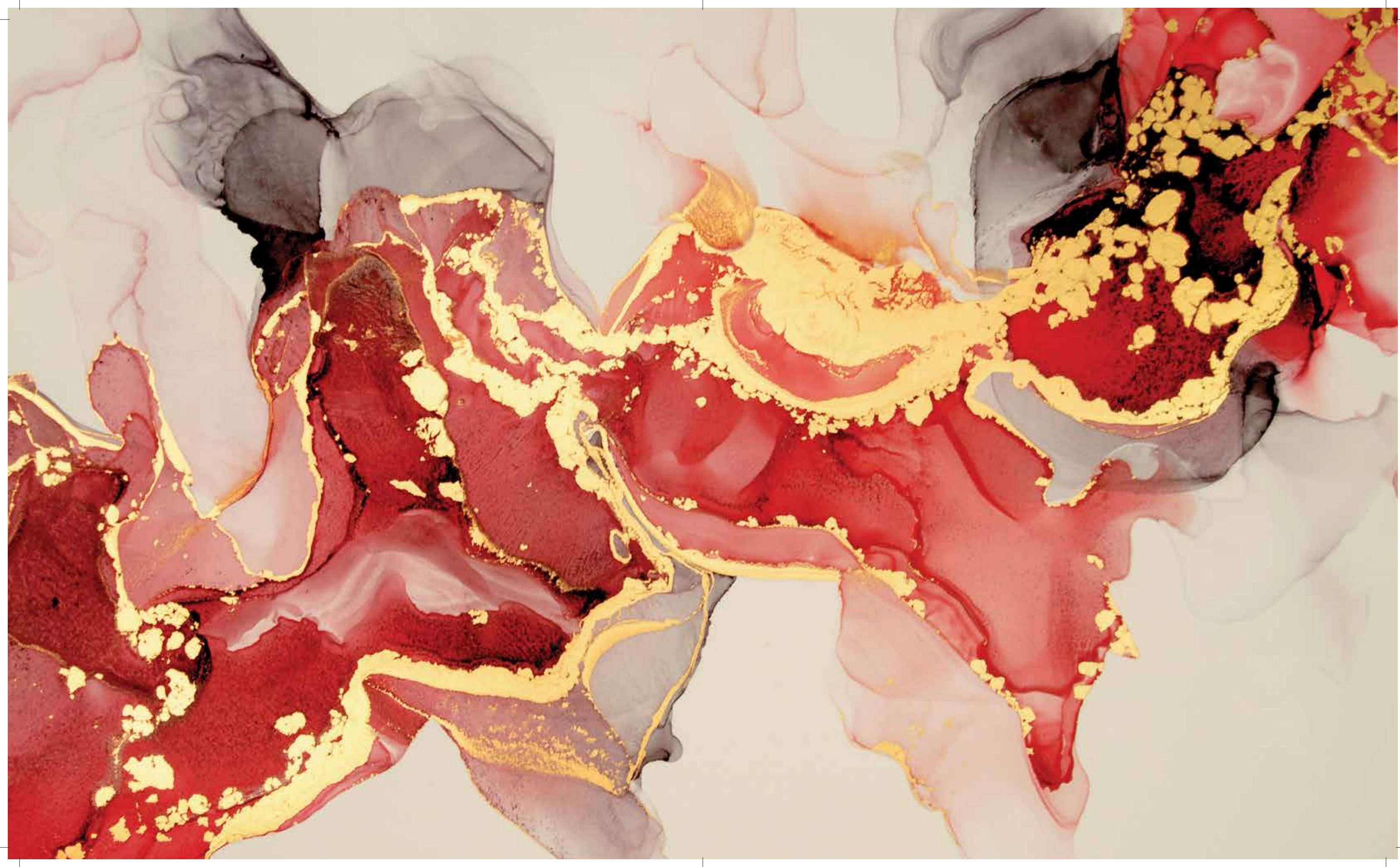
The hydrophobic nature of the coating helps in easy removal of the bio-film or microbial growth.



### Easy to clean

The water repellent characteristics of the coating makes it easier to clean, without the use of cleaning agents. The surface can be wiped dry with a soft cloth, and it can remain spot-free for a longer time.

\*Do not use abrasives like scrub-pads to clean the surface. To be cleaned only with a soft cloth and mild soap solution. Refer to warranty card for more details.



# Black

LOTUS 25  
HYDROPHOBIC TECHNOLOGY



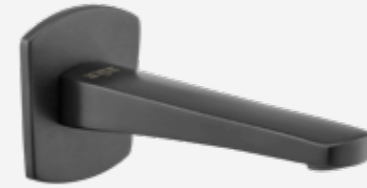
**MBALAC101**  
Angle Cock  
MRP 2,500/-



**MBALBC101**  
Bib Cock  
MRP 3,550/-



**MBALBC102**  
Bib Cock 2-in-1  
MRP 4,450/-



**MBALSP101**  
Plain Spout  
MRP 2,860/-



**MBALSP102**  
Button Spout  
MRP 4,000/-



**MBMYAC101**  
Angle Cock  
MRP 3,000/-



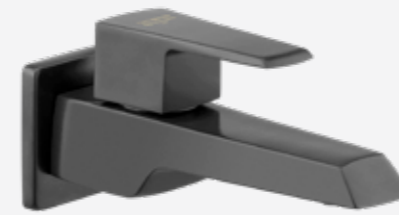
**MBALBM101**  
Single Lever Basin Mixer  
MRP 8,600/-



**MBALBM102**  
Single Lever Basin Mixer Extended  
MRP 11,375/-



**MBALCC101U**  
Upper for CSC 15 & 20 mm  
Compatible with B2CC101,  
B2CC102 and B2FC101  
MRP 1,720/-



**MBMYBC101**  
Bib Cock  
MRP 4,300/-



**MBMYBC102**  
Bib Cock 2-in-1  
MRP 4,800/-



**MBMYBM101**  
Single Lever Basin Mixer  
MRP 10,000/-



**MBALDV103UN**  
Upper SLCD for Basin Spout  
Compatible with CBB101  
MRP 7,900/-



**MBALDV111UN**  
Upper SLCD HF Push  
Compatible with CBDV202  
MRP 6,300/-



**MBALDV112UN**  
Upper SLCD 3-Inlet Push  
Compatible with CBDV302  
MRP 6,300/-



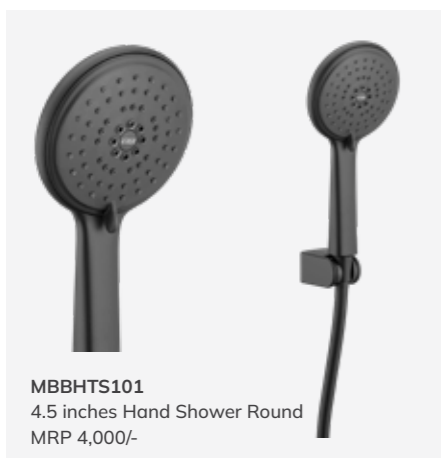
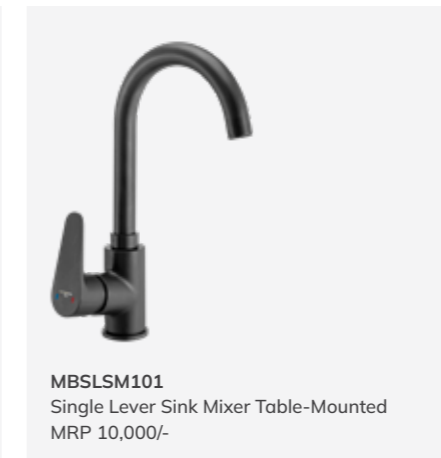
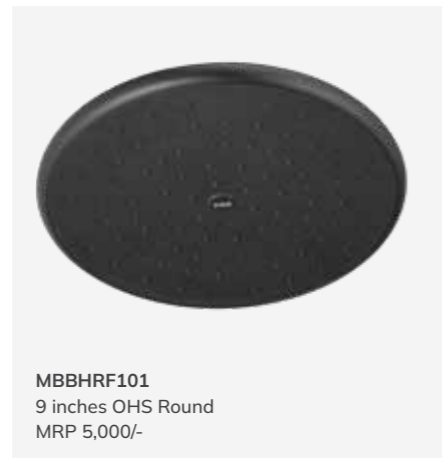
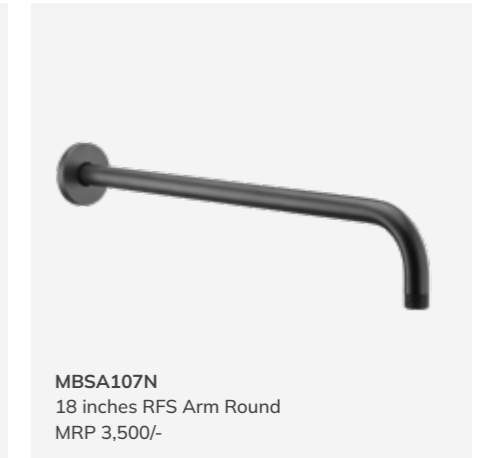
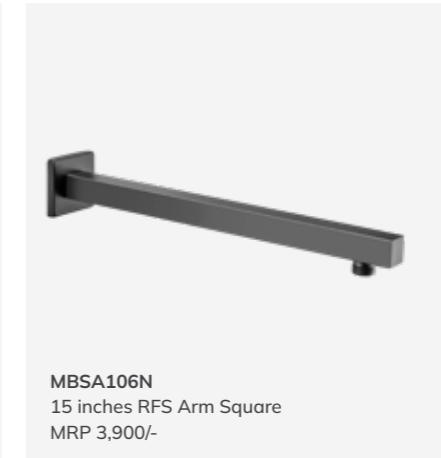
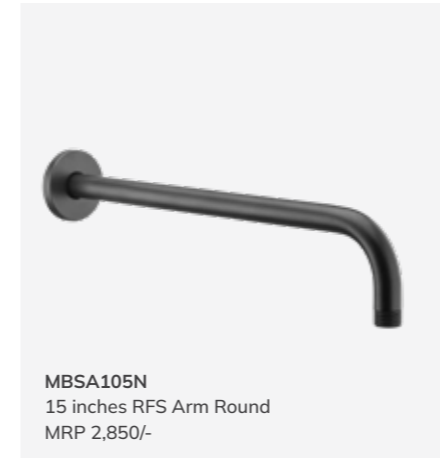
**MBMYBM102**  
Single Lever Basin Mixer Extended  
MRP 14,050/-



**MBMYCC101U**  
Upper for CSC 15 & 20 mm  
Compatible with B2CC101,  
B2CC102 and B2FC101  
MRP 2,310/-

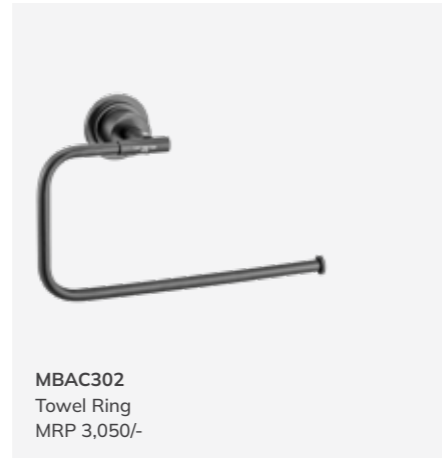


**MBMYDV103UN**  
Basin Spout Diverter Upper  
Compatible with CBB101  
MRP 8,400/-





**MBAC301**  
Towel Rail (61 cm)  
MRP 4,400/-



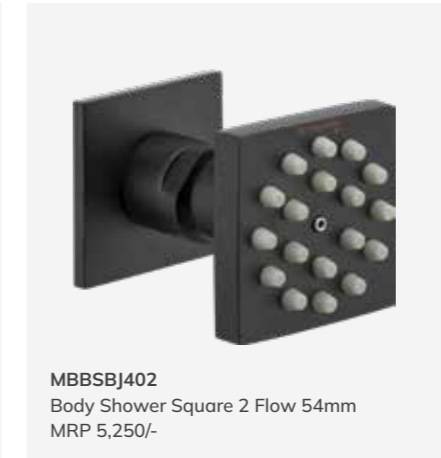
**MBAC302**  
Towel Ring  
MRP 3,050/-



**MBAC303**  
Soap Dish  
MRP 2,500/-



**MBBSBJ401**  
Body Shower Round 2 Flow 54mm  
MRP 5,250/-



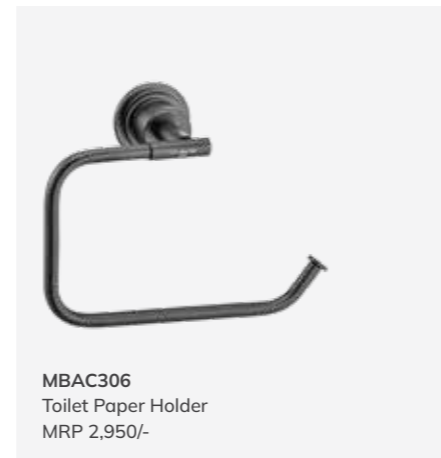
**MBBSBJ402**  
Body Shower Square 2 Flow 54mm  
MRP 5,250/-



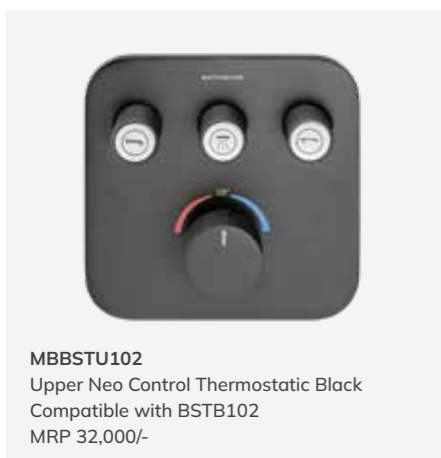
**MBAC304**  
Tumbler Holder  
MRP 2,500/-



**MBAC305**  
Robe Hook  
MRP 1,600/-



**MBAC306**  
Toilet Paper Holder  
MRP 2,950/-



**MBBSTU102**  
Upper Neo Control Thermostatic Black  
Compatible with BSTB102  
MRP 32,000/-



**MBE330J**  
Upper Dual FV Square Matt Black  
MRP 3,200/-



**MBE330F**  
Upper Dual FV Round Matt Black  
MRP 3,000/-

# Red

LOTUS 25  
HYDROPHOBIC TECHNOLOGY



**RDALAC101**  
Angle Cock  
MRP 2,500/-



**RDALBC101**  
Bib Cock  
MRP 3,550/-



**RDALBC102**  
Bib Cock 2-in-1  
MRP 4,450/-



**RDALSP101**  
Plain Spout  
MRP 2,860/-



**RDALSP102**  
Button Spout  
MRP 4,000



**RDMYAC101**  
Angle Cock  
MRP 3,000/-



**RDALBM101**  
Single Lever Basin Mixer  
MRP 8,600/-



**RDALBM102**  
Single Lever Basin Mixer Extended  
MRP 11,375/-



**RDALCC101U**  
Upper for CSC 15 & 20 mm  
Compatible with B2CC101,  
B2CC102 and B2FC101  
MRP 1,720/-



**RDMYBC101**  
Bib Cock  
MRP 4,300/-



**RDMYBC102**  
Bib Cock 2-in-1  
MRP 4,800/-



**RDMYBM101**  
Single Lever Basin Mixer  
MRP 10,000/-



**RDALDV103UN**  
Upper SLCD for Basin Spout  
Compatible with CBB101  
MRP 7,900/-



**RDALDV111UN**  
Upper SLCD HF Push  
Compatible with CBDV202  
MRP 6,300/-



**RDALDV112UN**  
Upper SLCD 3-Inlet Push  
Compatible with CBDV302  
MRP 6,300/-



**RDMYBM102**  
Single Lever Basin Mixer Extended  
MRP 14,050/-



**RDMYCC101U**  
Upper for CSC 15 & 20 mm  
Compatible with B2CC101,  
B2CC102 and B2FC101  
MRP 2,310/-



**RDMYDV103UN**  
Basin Spout Diverter Upper  
Compatible with CBB101  
MRP 8,400/-





**RDMYDV111UN**  
Diverter Upper HF Push  
Compatible with CBDV202  
MRP 7,500/-



**RDMYDV112UN**  
Upper SLCD 3-Inlet Push  
Compatible with CBDV302  
MRP 7,500/-



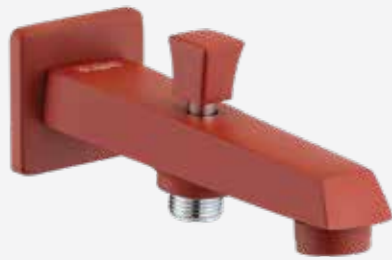
**RDMYSP101**  
Plain Spout  
MRP 3,400/-



**RDSA105N**  
15 inches RFS Arm Round  
MRP 2,850/-



**RDSA107N**  
18 inches RFS Arm Round  
MRP 3,500/-



**RDMYSP102**  
Button Spout  
MRP 5,350/-



**RDBHRF101**  
Overhead Shower Round Red  
MRP 5,000/-



**RDBHTS101**  
Hand Shower Round Red  
MRP 4,000/-



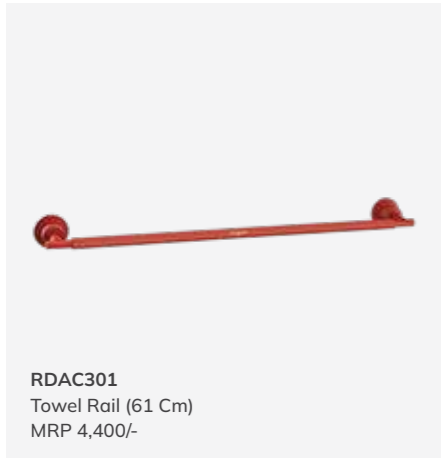
**RDC232N**  
Health Faucet Red  
MRP 2,900/-



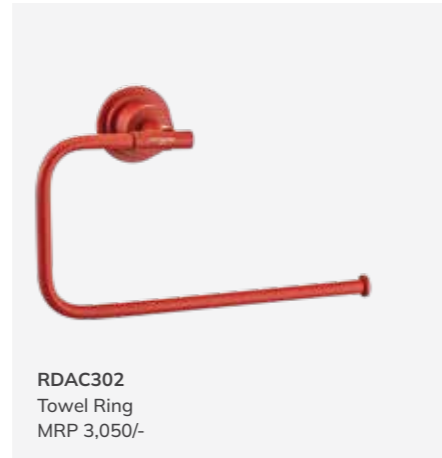
**RDSA108N**  
18 inches RFS Arm Square  
MRP 4,600/-



**RDSA108N**  
18 inches RFS Arm Square  
MRP 4,600/-



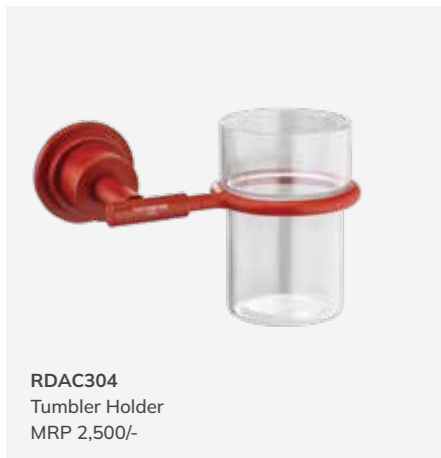
**RDAC301**  
Towel Rail (61 Cm)  
MRP 4,400/-



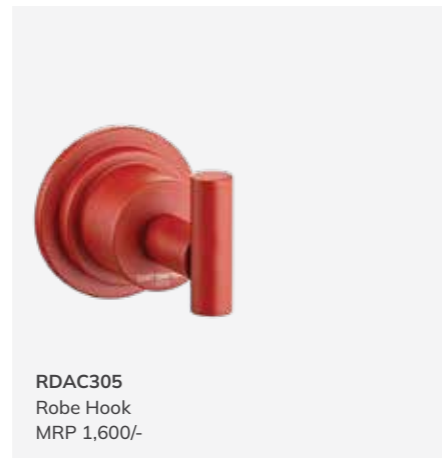
**RDAC302**  
Towel Ring  
MRP 3,050/-



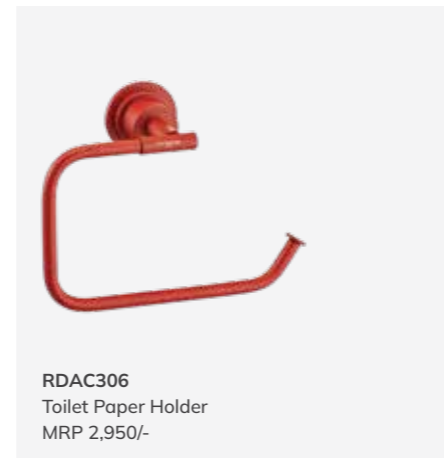
**RDAC303**  
Soap Dish  
MRP 2,500/-



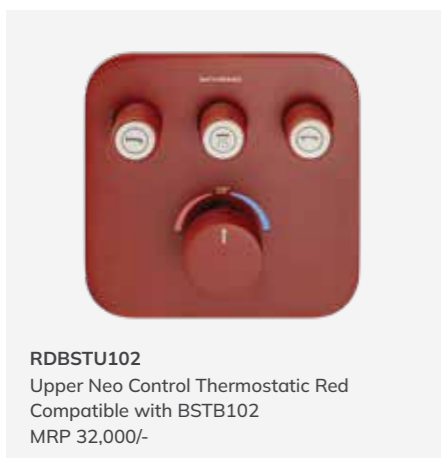
**RDAC304**  
Tumbler Holder  
MRP 2,500/-



**RDAC305**  
Robe Hook  
MRP 1,600/-



**RDAC306**  
Toilet Paper Holder  
MRP 2,950/-



**RDBSTU102**  
Upper Neo Control Thermostatic Red  
Compatible with BSTB102  
MRP 32,000/-

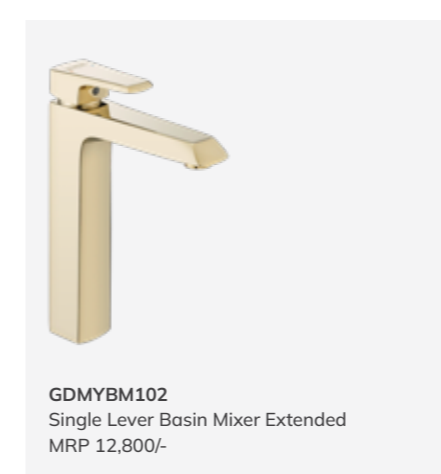
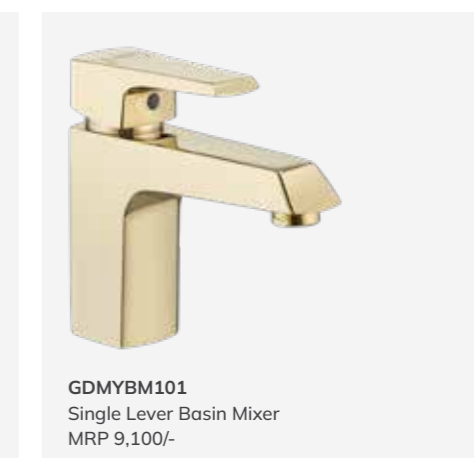
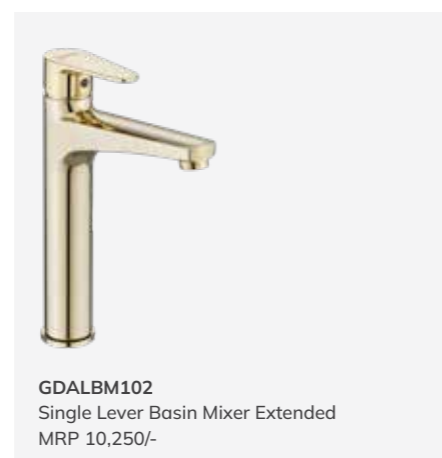
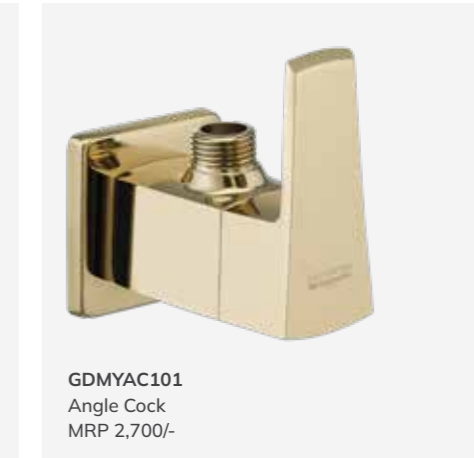
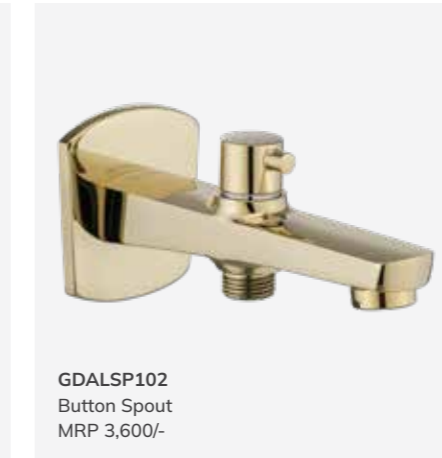


**RDE330J**  
Upper Dual FV Square Red  
MRP 3,200/-



**RDE330F**  
Upper Dual FV Round Red  
MRP 3,000/-

# French Gold

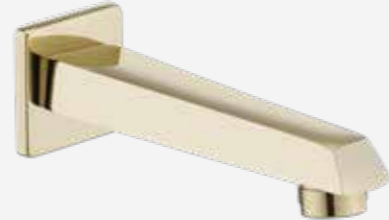




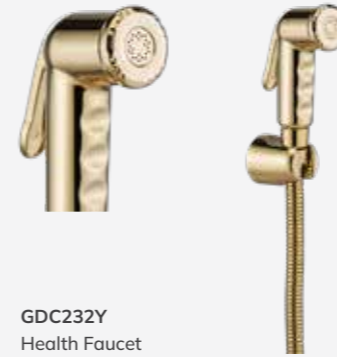
**GDMYDV111UN**  
Diverter Upper HF Push  
Compatible with CBDV202  
MRP 7,000/-



**GDMYDV112UN**  
Upper SLCD 3-Inlet Push  
Compatible with CBDV302  
MRP 7,000/-



**GDMYSP101**  
Plain Spout  
MRP 3,080/-



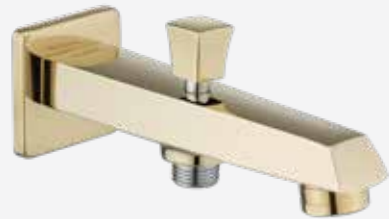
**GDC232Y**  
Health Faucet  
MRP 3,800/-



**GDSA105N**  
15 inches RFS Arm Round  
MRP 2,500/-



**GDSA106N**  
15 inches RFS Arm Square  
MRP 3,500/-



**GDMYSP102**  
Button Spout  
MRP 4,800/-



**GDBHRF101**  
9 inches OHS Round  
MRP 4,500/-



**GDBHRF102**  
9 inches OHS Square  
MRP 5,400/-



**GDSA107N**  
18 inches RFS Arm Round  
MRP 3,200/-



**GDSA108N**  
18 inches RFS Arm Square  
MRP 3,900/-



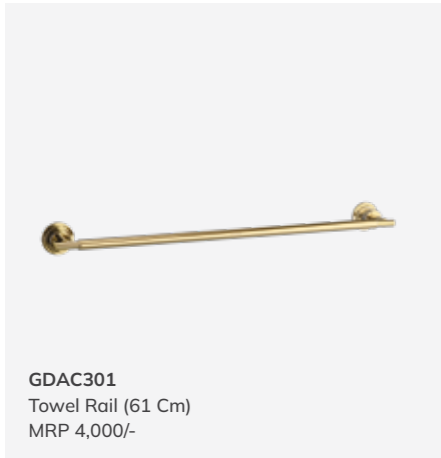
**GDBHTS101**  
4.5 inches Hand shower  
MRP 4,400/-



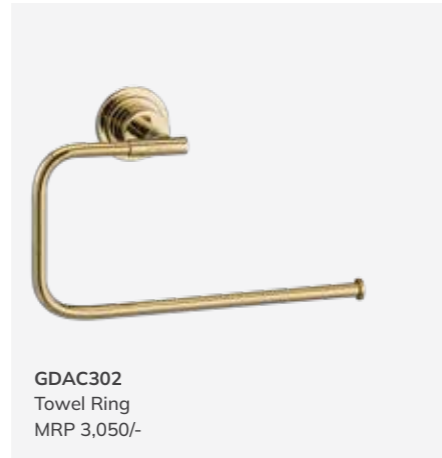
**GDBHTS102**  
4.5 inches Hand Shower Square  
MRP 4,950/-



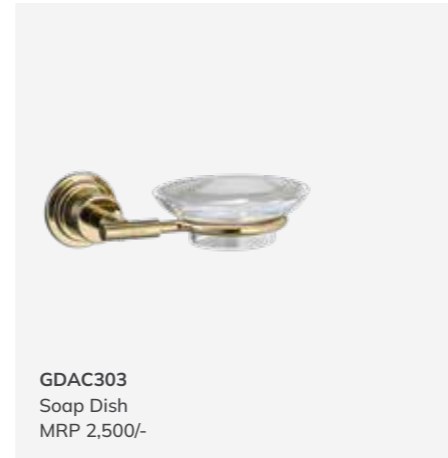
**GDC232M**  
Health Faucet  
MRP 2,900/-



**GDAC301**  
Towel Rail (61 Cm)  
MRP 4,000/-



**GDAC302**  
Towel Ring  
MRP 3,050/-



**GDAC303**  
Soap Dish  
MRP 2,500/-



**GDDBSJ402**  
Body Shower Square 2 Flow 54mm  
MRP 5,250/-



**GDBSTU102**  
Upper Neo Control Thermostatic French Gold  
Compatible with BSTB102  
MRP 32,000/-



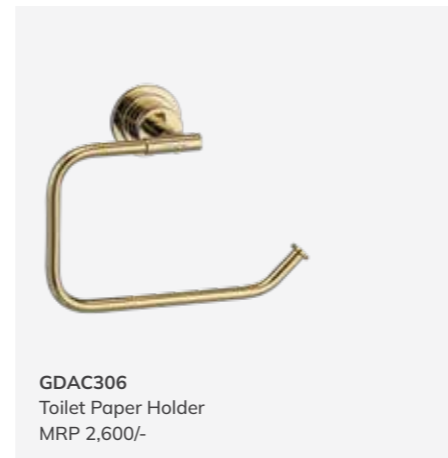
**GDE330J**  
Upper Dual FV Square French Gold  
MRP 3,000/-



**GDAC304**  
Tumbler Holder  
MRP 2,500/-



**GDAC305**  
Robe Hook  
MRP 1,600/-



**GDAC306**  
Toilet Paper Holder  
MRP 2,600/-



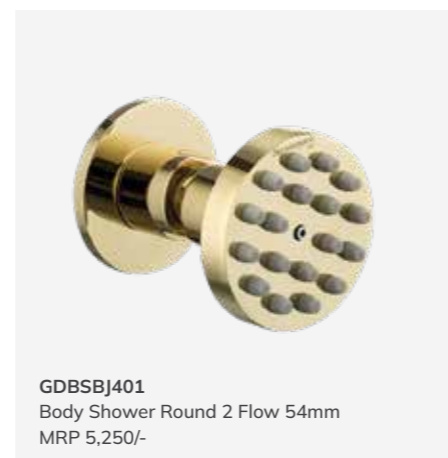
**GDE330F**  
Upper Dual FV Round French Gold  
MRP 2,800/-



**GDBHRF103**  
French Gold Round Overhead Shower (300 mm)  
MRP 18,500/-



**GDBHRF104**  
French Gold Square Shower (300x300 mm)  
MRP 21,500/-

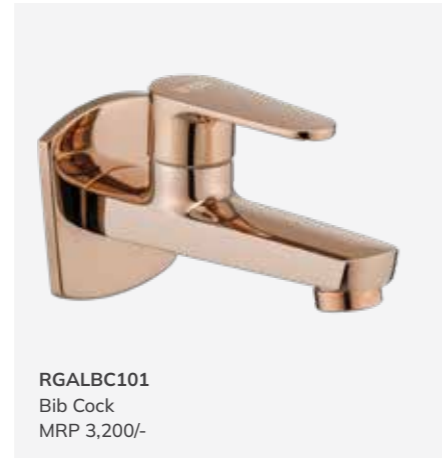


**GDDBSJ401**  
Body Shower Round 2 Flow 54mm  
MRP 5,250/-

# Rose Gold



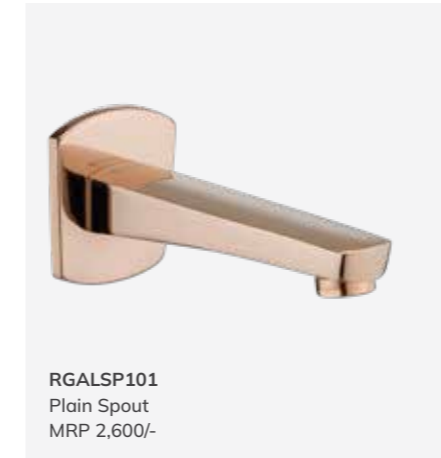
**RGALAC101**  
Angle Cock  
MRP 2,270/-



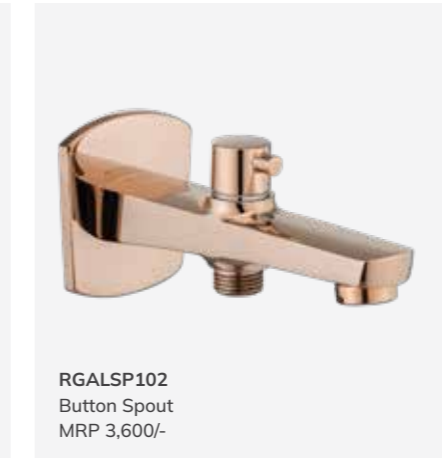
**RGALBC101**  
Bib Cock  
MRP 3,200/-



**RGALBC102**  
Bib Cock 2-in-1  
MRP 3,950/-



**RGALSP101**  
Plain Spout  
MRP 2,600/-



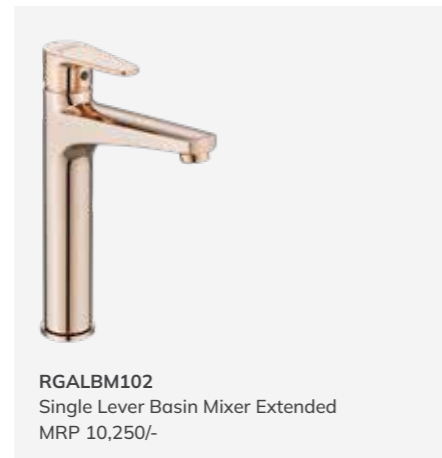
**RGALSP102**  
Button Spout  
MRP 3,600/-



**RGMYAC101**  
Angle Cock  
MRP 2,700/-



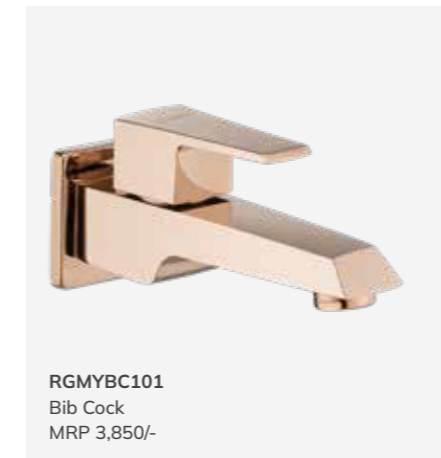
**RGALBM101**  
Single Lever Basin Mixer  
MRP 7,800/-



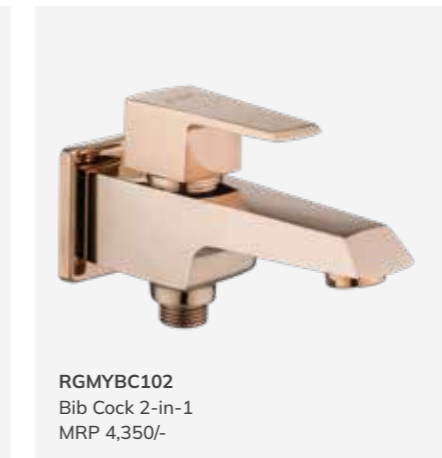
**RGALBM102**  
Single Lever Basin Mixer Extended  
MRP 10,250/-



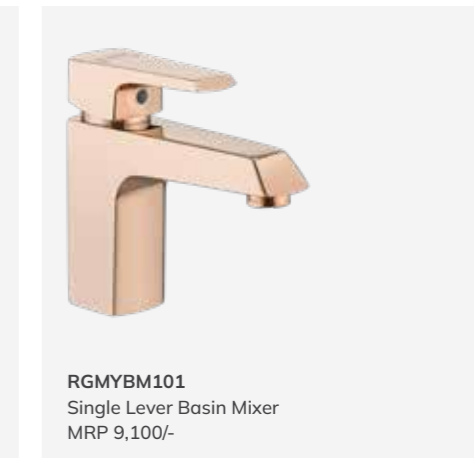
**RGALCC101U**  
Upper for CSC 15 & 20 mm  
Compatible with B2CC101,  
B2CC102 and B2FC101  
MRP 1,760/-



**RGMYBC101**  
Bib Cock  
MRP 3,850/-



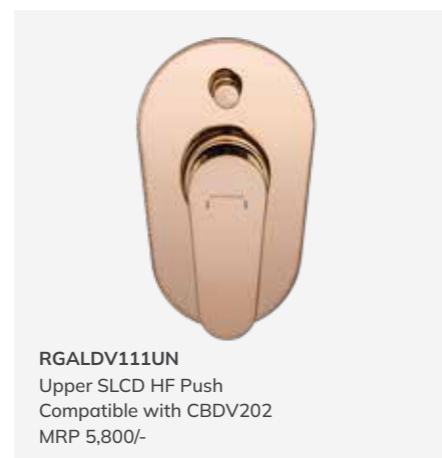
**RGMYBC102**  
Bib Cock 2-in-1  
MRP 4,350/-



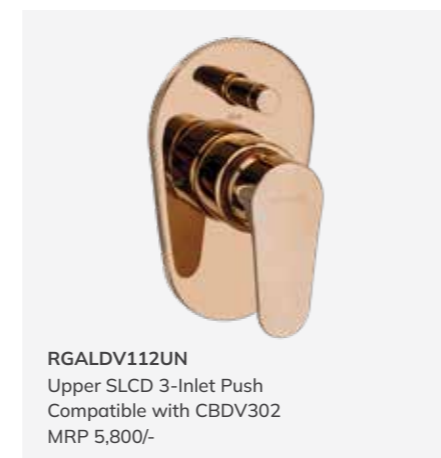
**RGMYBM101**  
Single Lever Basin Mixer  
MRP 9,100/-



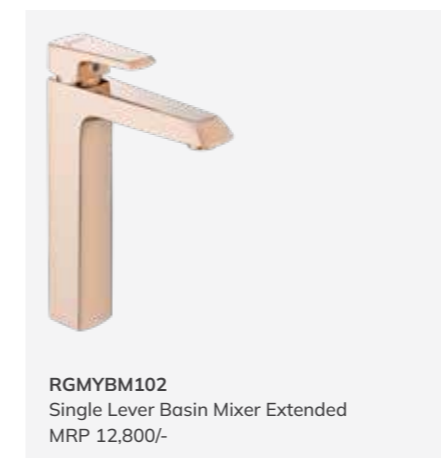
**RGALDV103UN**  
Upper SLCD for Basin Spout  
Compatible with CBB101  
MRP 7,000/-



**RGALDV111UN**  
Upper SLCD HF Push  
Compatible with CBDV202  
MRP 5,800/-



**RGALDV112UN**  
Upper SLCD 3-Inlet Push  
Compatible with CBDV302  
MRP 5,800/-



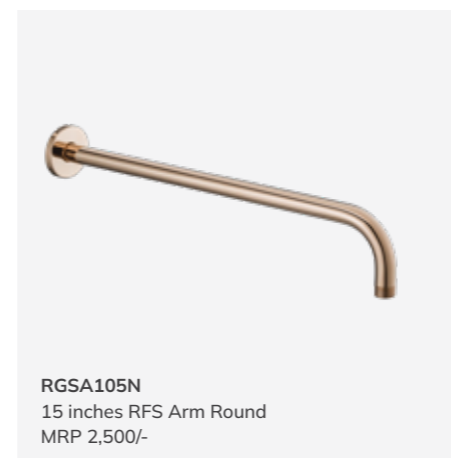
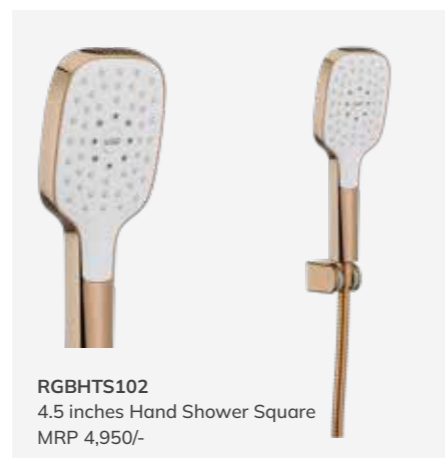
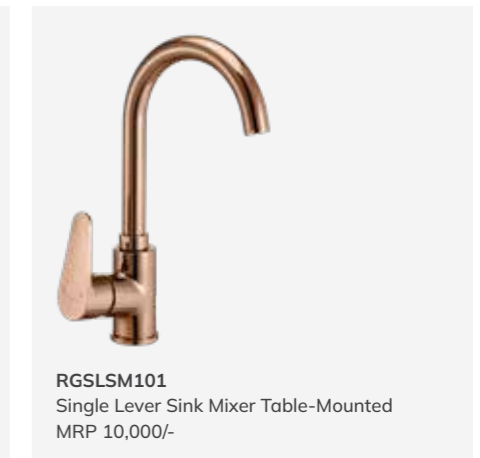
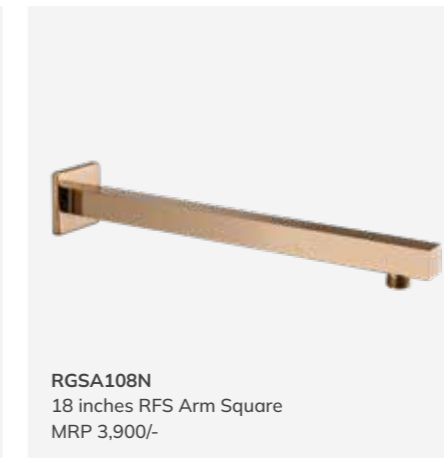
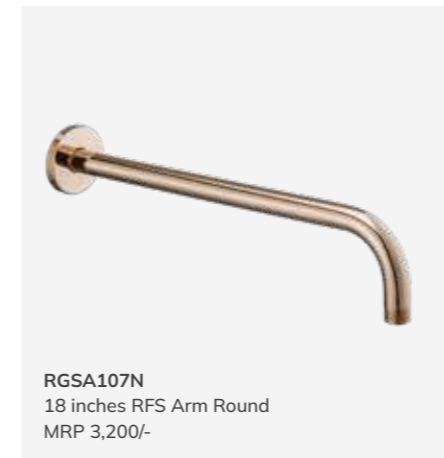
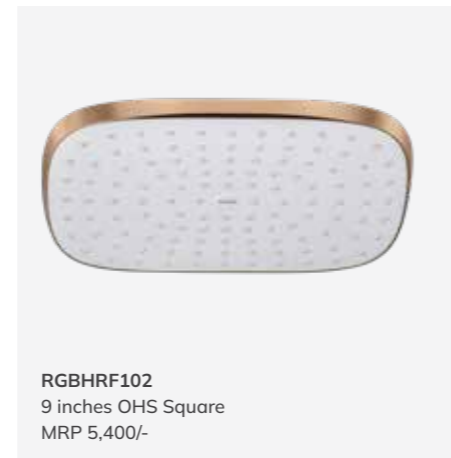
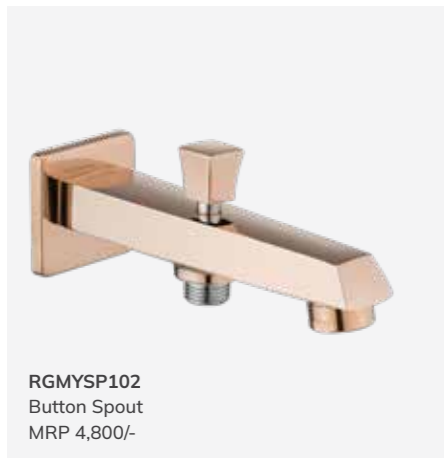
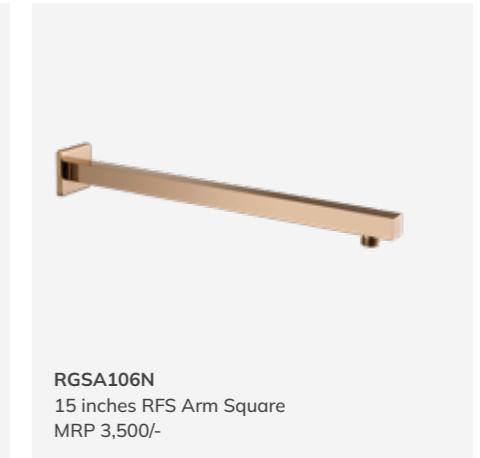
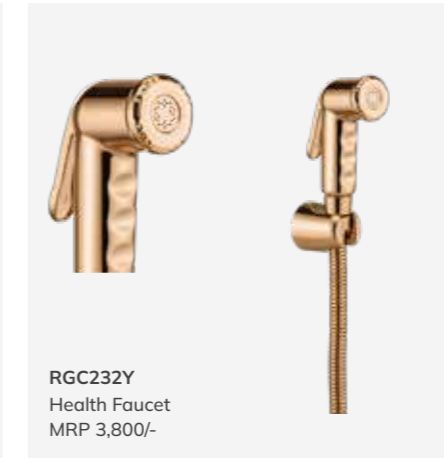
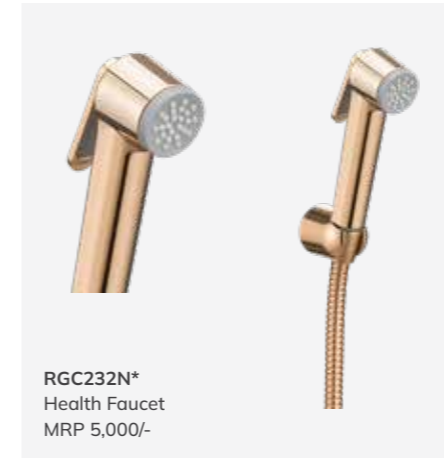
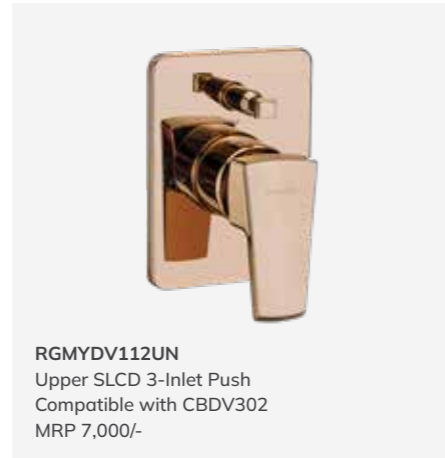
**RGMYBM102**  
Single Lever Basin Mixer Extended  
MRP 12,800/-

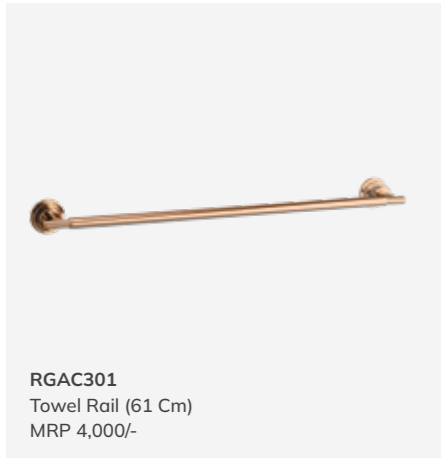


**RGMYCC101U**  
Upper for CSC 15 & 20 mm  
Compatible with B2CC101,  
B2CC102 and B2FC101  
MRP 2,310/-

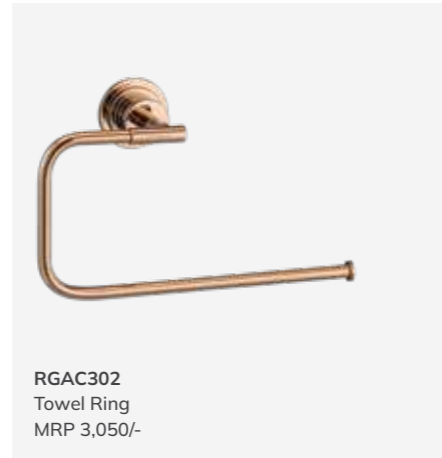


**RGMYDV103UN**  
Basin Spout Diverter Upper  
Compatible with CBB101  
MRP 7,800/-

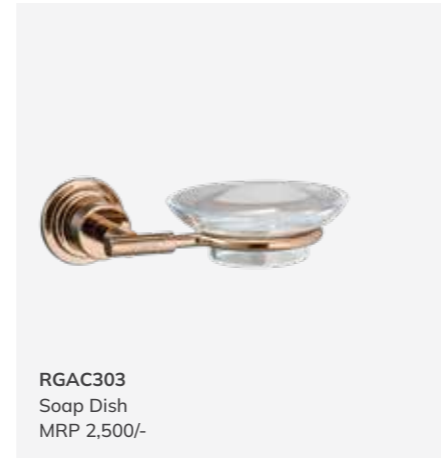




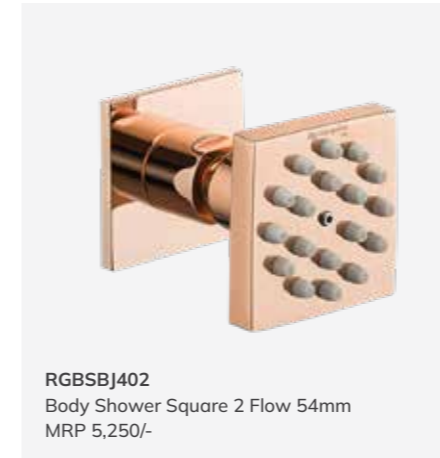
**RGAC301**  
Towel Rail (61 Cm)  
MRP 4,000/-



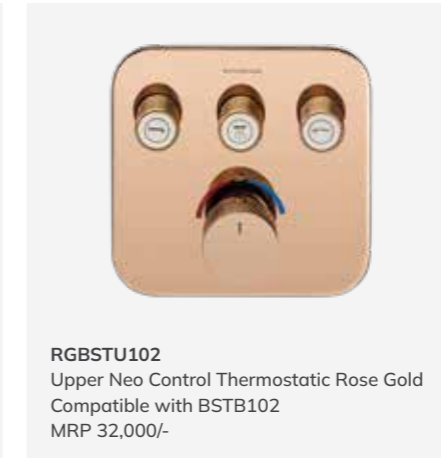
**RGAC302**  
Towel Ring  
MRP 3,050/-



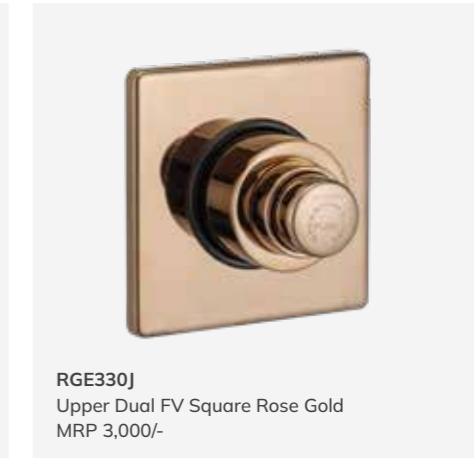
**RGAC303**  
Soap Dish  
MRP 2,500/-



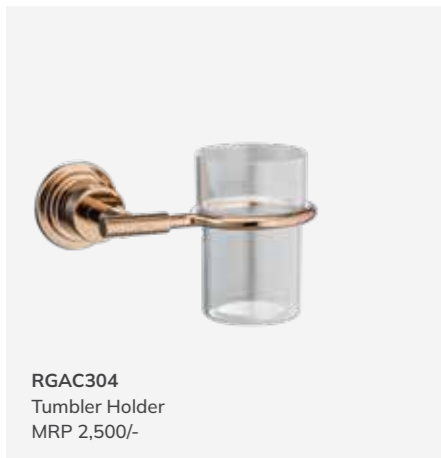
**RGBSBJ402**  
Body Shower Square 2 Flow 54mm  
MRP 5,250/-



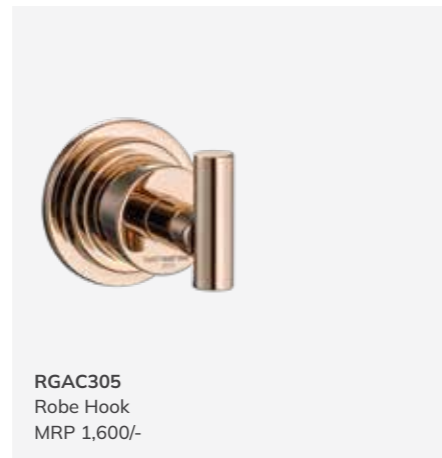
**RGBSTU102**  
Upper Neo Control Thermostatic Rose Gold  
Compatible with BSTB102  
MRP 32,000/-



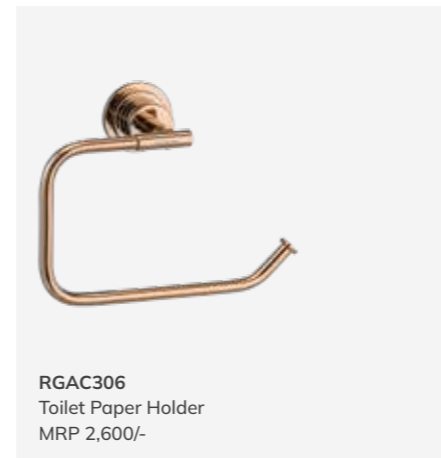
**RGE330J**  
Upper Dual FV Square Rose Gold  
MRP 3,000/-



**RGAC304**  
Tumbler Holder  
MRP 2,500/-



**RGAC305**  
Robe Hook  
MRP 1,600/-



**RGAC306**  
Toilet Paper Holder  
MRP 2,600/-



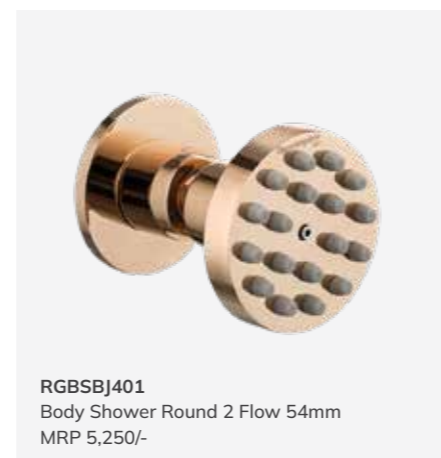
**RGE330F**  
Upper Dual FV Round Rose Gold  
MRP 2,800/-



**RGBHRF103**  
Rose Gold Round Overhead Shower (300 mm)  
MRP 20,000/-

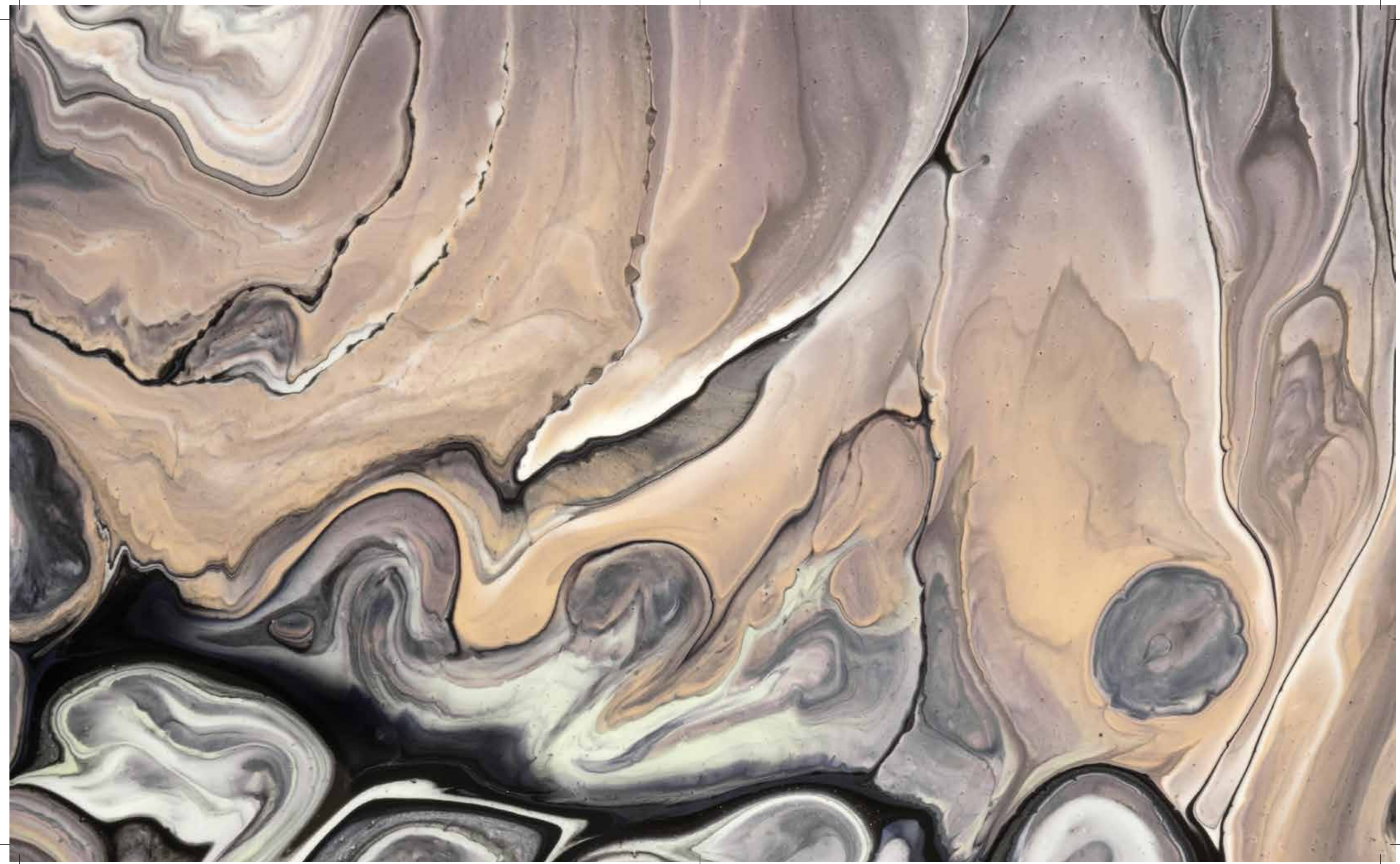


**RGBHRF104**  
Rose Gold Square Shower (300x300mm)  
MRP 23,000/-

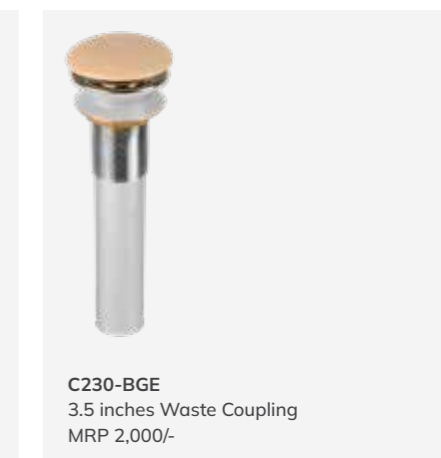
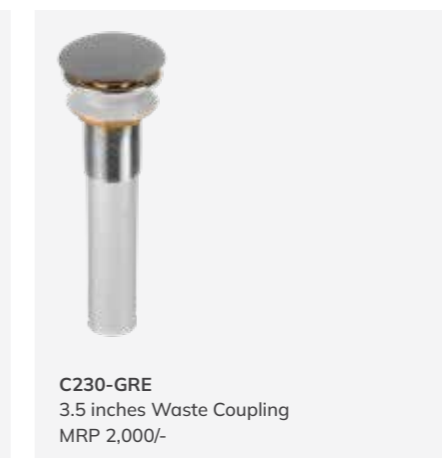
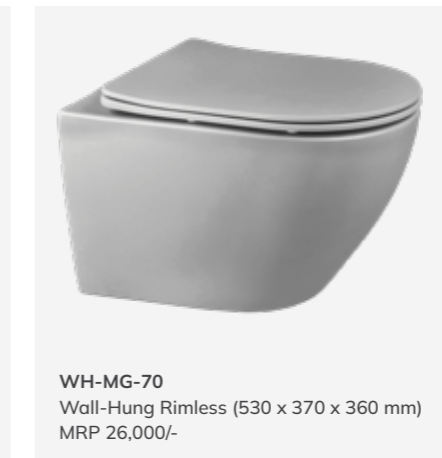
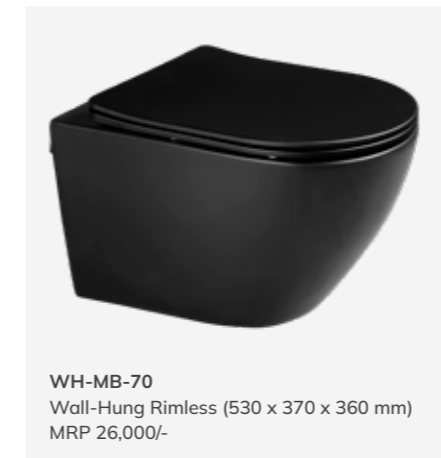
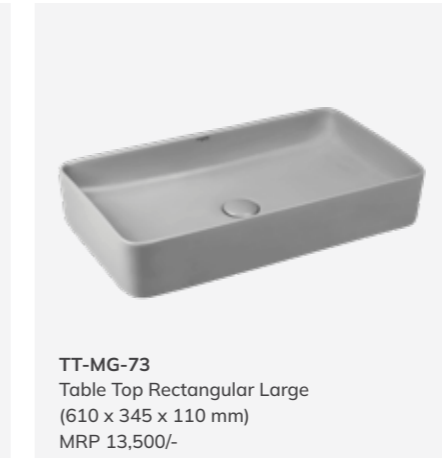


**RGBSBJ401**  
Body Shower Round 2 Flow 54mm  
MRP 5,250/-

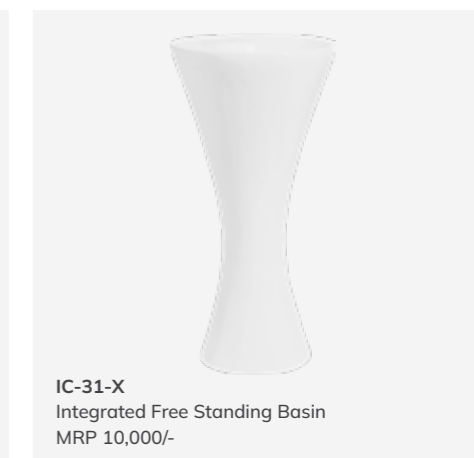
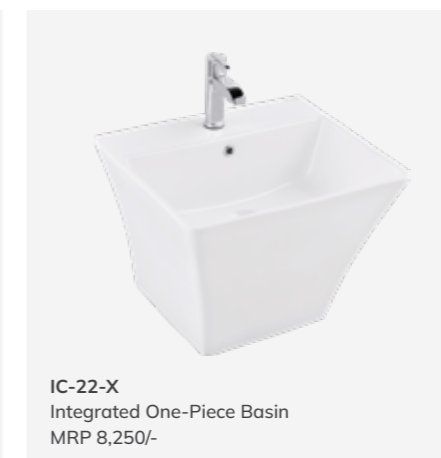
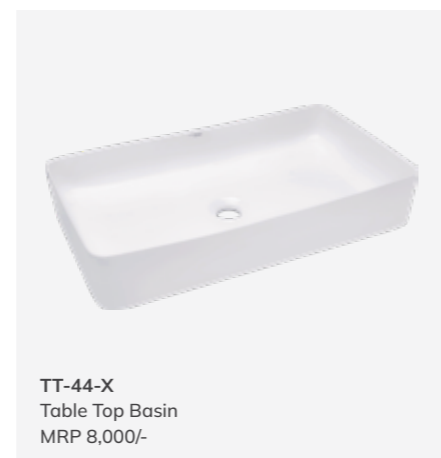
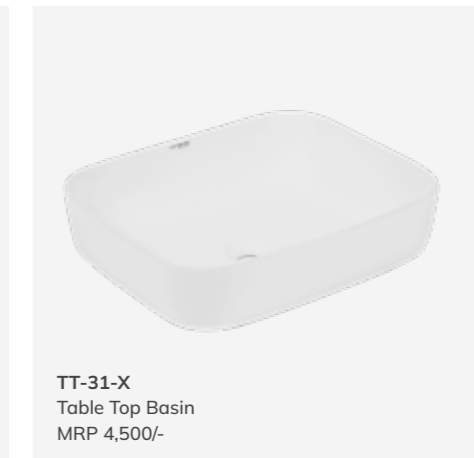
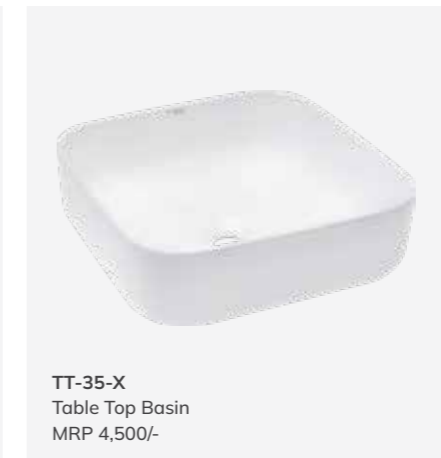
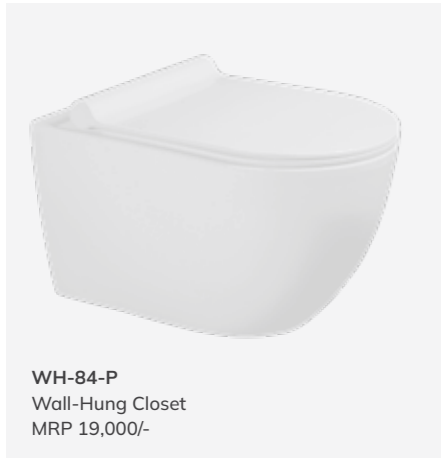




# Canvas Sanitaryware



# Other Compatible Sanitaryware



# Glossy Black Sanitaryware



**WH-90-BLK**  
Wall-Hung Closet - Glossy Black  
MRP 20,000/-



**WH-92-BLK**  
Wall-Hung Closet - Glossy Black  
MRP 17,500/-



**WH-91-BLK**  
Wall-Hung Closet - Glossy Black  
MRP 19,000/-



**TT-90-GBL**  
Table Top Basin - Glossy Black  
MRP 9,000/-



**TT-91-GBL**  
Table Top Basin - Glossy Black  
MRP 9,000/-



**TT-92-GBL**  
Table Top Basin - Glossy Black  
MRP 9,000/-



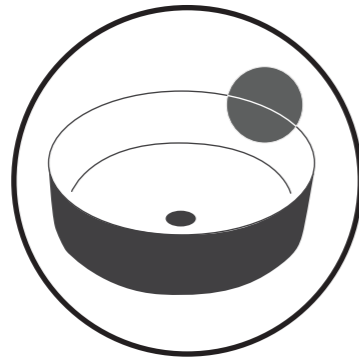
**TT-93-GBL**  
Table Top Basin - Glossy Black  
MRP 9,000/-



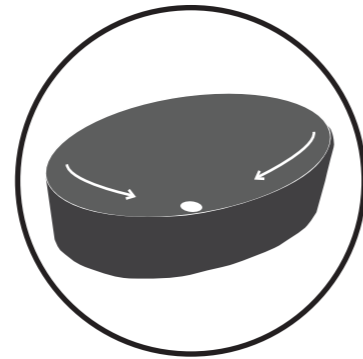
**C-230-GBL**  
Waste Coupling - Glossy Black  
MRP 2,000/-

# Sanitaryware Features

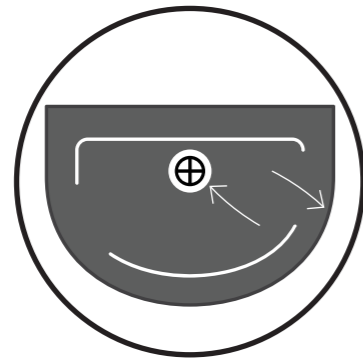
## Table -top Basins



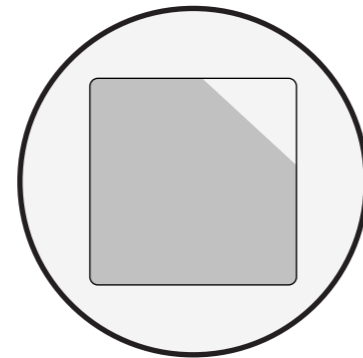
Thin rim table-top basins



Basins with greater depth to avoid water splash

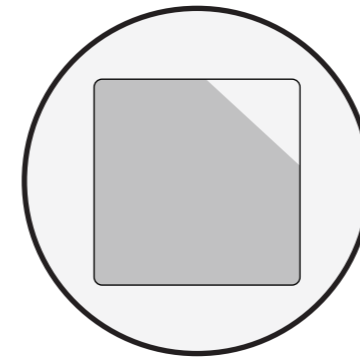


Canvas Basins available with matching ceramic pop-up waste coupling

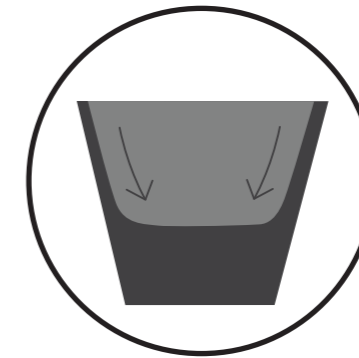


Matte finish for a contemporary-looking bathroom

## Wall Hungs



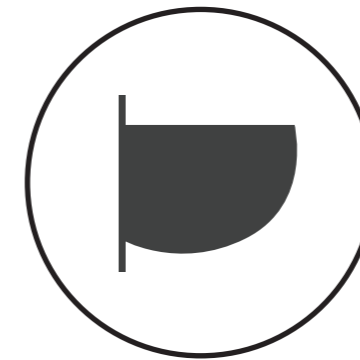
Matte finish for a contemporary-looking bathroom



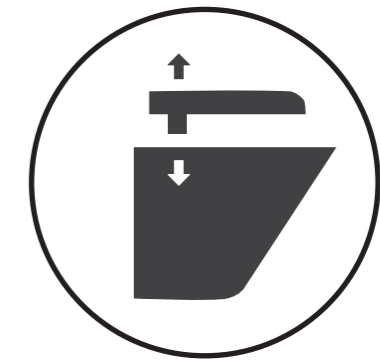
Rimless and hygienic



UF soft-close seat cover




Compact, elegant designs



Click-release seat cover

# Universal Concealed body



**CBDV202**  
Canvas SLCD High Flow  
MRP 4,500/-

<u>Compatible Uppers - Altius</u>	<u>Compatible Uppers - Mystic</u>
French Gold GDALDV111UN	French Gold GDMYDV111UN
Rose Gold RGALDV111UN	Rose Gold RGMVDV111UN
Red RDALDV111UN	Red RDMYDV111UN
Black MBALDV111UN	Black MBMYDV111UN



**CBDV302**  
CANVAS SLCD 3-INLET  
MRP 4,500/-

<u>Compatible Uppers - Altius</u>	<u>Compatible Uppers - Mystic</u>
French Gold GDALDV112UN	French Gold GDMYDV112UN
Rose Gold RGALDV112UN	Rose Gold RGMVDV112UN
Red RDALDV112UN	Red RDMYDV112UN
Black MBALDV112UN	Black MBMYDV112UN



**CBBD101**  
Canvas SLCD Basin Spout  
MRP 4,000/-

<u>Compatible Uppers - Altius</u>	<u>Compatible Uppers - Mystic</u>
French Gold GDALDV103UN	French Gold GDMYDV103UN
Rose Gold RGALDV103UN	Rose Gold RGMVDV103UN
Red RDALDV103UN	Red RDMYDV103UN
Black MBALDV103UN	Black MBMYDV103UN

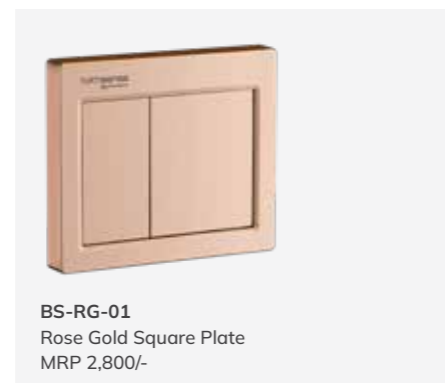


**BSTB102**  
NeoControl  
MRP 45,000/-

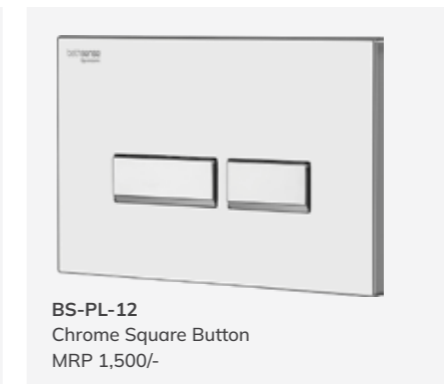
<u>Compatible Uppers - NeoControl</u>
French Gold GDBSTU102
Rose Gold RGBSTU102
Black MBBSTU102
Red RDBSTU102

# Concealed Cisterns

## Mechanical Cisterns



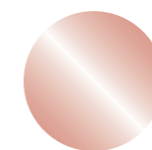
## Pneumatic Cisterns



Also available in Canvas Colours



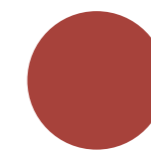
French gold  
(Metallic finish)



Rose gold  
(Metallic finish)



Black  
(Matt finish)

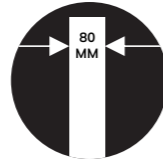


Red  
(Matt finish)

# Features that understand you



Silent, noiseless fill valve to minimize flush noise



Slim, 80 mm thick concealed cistern - ideal for contemporary bathrooms



Anti-condensation layer insulated to fight against mould, mildew and odour



Dual flush option to save and optimize water usage



Sturdy, single body construction to withstand compression



Simple detachable drain valve for easy access maintenance



Installation guide for quick and easy installation



Dirt-resistant filter in the fill valve prevents dirt from entering the cistern



Scan here to view installation video

\*Installation and maintenance manual available inside the box in Hindi and English



# Warranty Guide for CP Fittings

For complete terms & conditions on warranty, please refer to the warranty manual shared on our website [bathsense.asianpaints.com](http://bathsense.asianpaints.com) or visit an Asian Paints bath dealer.



For the warranty to be valid, please register your warranty by calling 1800-266-2079 or email us at [bathsolutions@asianpaints.com](mailto:bathsolutions@asianpaints.com) or register on [bathsense.asianpaints.com](http://bathsense.asianpaints.com)

## Warranty Chart

Products	Residential Use	Commercial Use
Faucet Surface Coating (Black and Red)	25 years	15 years
Faucet Surface Coating PVD (French Gold and Rose Gold)	12 years	7 years
Faucet Mechanical	10 years	7 years
Showers and Health Faucets	3 years	2 years

This is an Asian Paints Limited Faucet exclusive written warranty. Contact us at 18002662079 or email us at [bathsolutions@asianpaints.com](mailto:bathsolutions@asianpaints.com) Visit us at [bathsense.asianpaints.com](http://bathsense.asianpaints.com)

## Warranty Terms and Conditions:

- The warranty period is not renewed or extended on supply of spare parts during the warranty. The Company will, at its sole discretion, repair or replace any defective component or part of product with or without cost.
- The warranty shall commence on the date when the consumer telephonically lodges his warranty with the Company by contacting 1800-266-2079 or visiting the website [bathsense.asianpaints.com](http://bathsense.asianpaints.com) and furnishing all the purchase and personal details requested by the Company ("the Commencement Date"), within 15 days of purchase.
- The Company or its Authorized Service Franchisee solely can service/repair the product.
- The warranty becomes null and void if installation is not done by a qualified and experienced technician and/or as per the installation procedure laid down by the Company.
- Hoses, rubber parts, plastic parts and consumables are not included in warranty. In case of defects on such products arising prior to installation, the company will decide on repair/replacement after inspection.
- This warranty is only effective if proof of purchase (original sales receipt) is provided with all warranty claims or requests.
- Warranty will cover only manufacturing defects of the product and will not cover any defects arising out of the control of the Company, like insufficient water pressure, high water impurities/hardness, breakage of parts due to excessive force etc. In no event shall the liability of the Company exceed the purchase price of the product. Improper care and cleaning will void the warranty.
- For optimum bathing experience, maintain a minimum water pressure of 1 bar (10 psi) and maximum of 5 bar (50 psi). In case of lower/higher pressure, use of external pressure pumps or pressure reduction valves respectively is recommended.
- Do not use cleaners/detergent agents which contain chemicals/bleach/acid etc. Most of the toilet cleaning products have high acidic content, which may damage the product surface/finish.

## Maintenance, Installation & Service Guidelines:

- The protective coating prevents the accumulation of water droplets, makes the product easy to clean and eliminates the need for abrasive cleaners.
- Clean the surface using only a soft sponge. Cleaning pads labeled as "Safe for non-stick products" are recommended.
- DO NOT use abrasives/scrubs/coarse cloth/scouring agents to clean. Use of the same can damage the coating and will make the warranty void.
- DO NOT use bleach/acids/toilet cleaning agents on the product. Use of the same can result in fading of the colour and will make the warranty void.
- Warranty is valid under normal. operating conditions of water quality with below limiting values: TDS<=800 mg/L, Hardness<= 375 mg/L.
- It is recommended to wipe the product dry using a soft cloth immediately after cleaning with water, to maintain the colour.
- The handle can be opened using the allen key provided with the product; DO NOT use sharp tools like a spanner or hammer on the colour coated surfaces of the product.
- Installation to be done by a professional as per above instructions. Dismantling and service of the product post-installation should be done.

# Warranty Guide for Sanitaryware

We, ASIAN PAINTS LIMITED ('Company') hereby warrant its 'Sanitary 8- Plumbing' products which are likely to be installed and to be used for residential as well as non-residential/commercial purposes. The same will be supplied free from any manufacturing defects and workmanship.

When these products are installed for use at their respective sites, it is advisable to follow the prescribed directions. These products are to be serviced for the period of time set forth in the warranty coverage table below, commencing from the date of purchase of the said products.

## Warranty Chart

Products	Residential Use	Commercial Use
Basic Sanitaryware Appliances (washbasin, pedestals, urinals, cistern, water closet)	10 years	5 years
Ceramic Ware (cover basins and closets)	10 years	5 years
Toilet Seat Covers and PVC Cisterns	2 years	1 year
Fittings (fill and flush valve kit)	2 years	1 year
Electronic Sensor	1 year	1 year
Concealed Cisterns	10 years	5 years

# After Sales Service



Unmatched warranty of 10 years for EssEss, Bathsense and 12 years for Royale Bathrooms.



A dedicated Customer Toll-Free number for complaint registration and tracking.



110+ technicians across the country, resolving issues in the remotest locations.



Zero cost of servicing for parts covered under warranty.



A benchmarked time for complaint closure within 48 working hours.



Paperless warranty through warranty registration.

**ZERO COST OF SERVICING, CREATING VALUE FOR MONEY THROUGHOUT THE LIFE OF THE PRODUCT.**

# Product Details

No.	CAT Code	Colour	MRP	Technology	Surface coating Residential Warranty
01	MBALAC101	Matte Black	2,500	Lotus 25 Hydrophobic Coating	25 years
02	MBALBC101	Matte Black	3,550	Lotus 25 Hydrophobic Coating	25 years
03	MBALBC102	Matte Black	4,450	Lotus 25 Hydrophobic Coating	25 years
04	MBALBM101	Matte Black	8,600	Lotus 25 Hydrophobic Coating	25 years
05	MBALBM102	Matte Black	11,375	Lotus 25 Hydrophobic Coating	25 years
06	MBALCC101U	Matte Black	1,720	Lotus 25 Hydrophobic Coating	25 years
07	MBALDV103UN	Matte Black	7,900	Lotus 25 Hydrophobic Coating	25 years
08	MBALDV111UN	Matte Black	6,300	Lotus 25 Hydrophobic Coating	25 years
09	MBALDV112UN	Matte Black	6,300	Lotus 25 Hydrophobic Coating	25 years
10	MBALSP101	Matte Black	2,860	Lotus 25 Hydrophobic Coating	25 years
11	MBALSP102	Matte Black	4,000	Lotus 25 Hydrophobic Coating	25 years
12	MBMYAC101	Matte Black	3,000	Lotus 25 Hydrophobic Coating	25 years
13	MBMYBC101	Matte Black	4,300	Lotus 25 Hydrophobic Coating	25 years
14	MBMYBC102	Matte Black	4,800	Lotus 25 Hydrophobic Coating	25 years
15	MBMYBM101	Matte Black	10,000	Lotus 25 Hydrophobic Coating	25 years
16	MBMYBM102	Matte Black	14,050	Lotus 25 Hydrophobic Coating	25 years
17	MBMYCC101U	Matte Black	2,310	Lotus 25 Hydrophobic Coating	25 years
18	MBMYDV103UN	Matte Black	8,400	Lotus 25 Hydrophobic Coating	25 years

No.	CAT Code	Colour	MRP	Technology	Surface coating Residential Warranty
19	MBMYDV111UN	Matte Black	7,500	Lotus 25 Hydrophobic Coating	25 years
20	MBMYDV112UN	Matte Black	7,500	Lotus 25 Hydrophobic Coating	25 years
21	MBMYSP101	Matte Black	3,400	Lotus 25 Hydrophobic Coating	25 years
22	MBMYSP102	Matte Black	5,350	Lotus 25 Hydrophobic Coating	25 years
23	MBBHTS101	Matte Black	4,000	Matt Coating Technology	3 years
24	MBBHTS102	Matte Black	4,400	Matt Coating Technology	3 years
25	MBBHRF101	Matte Black	5,000	Matt Coating Technology	3 years
26	MBBHRF102	Matte Black	6,000	Matt Coating Technology	3 years
27	MBC232N	Matte Black	2,900	Matt Coating Technology	3 years
28	MBSA108N	Matte Black	4,400	PVD Coating Technology	12 years
29	MBSA106N	Matte Black	3,900	PVD Coating Technology	12 years
30	MBSA107N	Matte Black	3,500	PVD Coating Technology	12 years
31	MBSA105N	Matte Black	2,850	PVD Coating Technology	12 years
32	MBAC301	Matte Black	4,400	Lotus 25 Hydrophobic Coating	5 years
33	MBAC302	Matte Black	3,050	Lotus 25 Hydrophobic Coating	5 years
34	MBAC303	Matte Black	2,500	Lotus 25 Hydrophobic Coating	5 years
35	MBAC304	Matte Black	2,500	Lotus 25 Hydrophobic Coating	5 years
36	MBAC305	Matte Black	1,600	Lotus 25 Hydrophobic Coating	5 years

# Product Details

No.	CAT Code	Colour	MRP	Technology	Surface coating Residential Warranty
37	MBAC306	Matte Black	2,950	Lotus 25 Hydrophobic Coating	5 years
38	BS-MB-01	Matte Black	1,300	Injection Moulding Technology	10 years
39	MBSLSM101	Matte Black	10,000	Lotus 25 hydrophobic coating	25 years
40	GDMYBM101	French Gold	9,100	PVD Coating Technology	12 years
41	GDMYBM102	French Gold	12,800	PVD Coating Technology	12 years
42	GDMYAC101	French Gold	2,700	PVD Coating Technology	12 years
43	GDMYBC101	French Gold	3,850	PVD Coating Technology	12 years
44	GDMYSP101	French Gold	3,080	PVD Coating Technology	12 years
45	GDMYCC101U	French Gold	2,310	PVD Coating Technology	12 years
46	GDALBM101	French Gold	7,800	PVD Coating Technology	12 years
47	GDALBM102	French Gold	10,250	PVD Coating Technology	12 years
48	GDALAC101	French Gold	2,270	PVD Coating Technology	12 years
49	GDALBC101	French Gold	3,200	PVD Coating Technology	12 years
50	GDALSP101	French Gold	2,600	PVD Coating Technology	12 years
51	GDALCC101U	French Gold	1,760	PVD Coating Technology	12 years
52	GDALDV111UN	French Gold	5,800	PVD Coating Technology	12 years
53	GDALDV112UN	French Gold	5,800	PVD Coating Technology	12 years
54	GDALDV103UN	French Gold	7,000	PVD Coating Technology	12 years

No.	CAT Code	Colour	MRP	Technology	Surface coating Residential Warranty
55	GDMYDV111UN	French Gold	7,000	PVD Coating Technology	12 years
56	GDMYDV112UN	French Gold	7,000	PVD Coating Technology	12 years
57	GDMYDV103UN	French Gold	7,800	PVD Coating Technology	12 years
58	GDALBC102	French Gold	3,950	PVD Coating Technology	12 years
59	GDMYBC102	French Gold	4,350	PVD Coating Technology	12 years
60	GDALSP102	French Gold	3,600	PVD Coating Technology	12 years
61	GDMYSP102	French Gold	4,800	PVD Coating Technology	12 years
62	GDBHRF102	French Gold	5,400	Electroplating Technology	3 years
63	GDBHTS102	French Gold	4,950	Electroplating Technology	3 years
64	GDBHRF101	French Gold	4,500	Electroplating Technology	3 years
65	GDBHTS101	French Gold	4,400	Electroplating Technology	3 years
66	GDSA108N	French Gold	3,900	PVD Coating Technology	12 years
67	GDSA106N	French Gold	3,500	PVD Coating Technology	12 years
68	GDSA107N	French Gold	3,200	PVD Coating Technology	12 years
69	GDSA105N	French Gold	2,500	PVD Coating Technology	12 years
70	GDC232M	French Gold	2,900	PVD Coating Technology	5 years
71	BS-FG-01	French Gold	2,800	PVD Coating Technology	10 years
72	GDAC301	French Gold	4,000	PVD Coating Technology	5 years

# Product Details

No.	CAT Code	Colour	MRP	Technology	Surface coating Residential Warranty
73	GDAC302	French Gold	3,050	PVD Coating Technology	5 years
74	GDAC303	French Gold	2,500	PVD Coating Technology	5 years
75	GDAC304	French Gold	2,500	PVD Coating Technology	5 years
76	GDAC305	French Gold	1,600	PVD Coating Technology	5 years
77	GDAC306	French Gold	2,600	PVD Coating Technology	5 years
78	GDC232Y	French Gold	3,800	PVD Coating Technology	3 years
79	RDALAC101	Matte Red	2,500	Lotus 25 Hydrophobic Coating	25 years
80	RDALBC101	Matte Red	3,550	Lotus 25 Hydrophobic Coating	25 years
81	RDALBC102	Matte Red	4,450	Lotus 25 Hydrophobic Coating	25 years
82	RDALBM101	Matte Red	8,600	Lotus 25 Hydrophobic Coating	25 years
83	RDALBM102	Matte Red	11,375	Lotus 25 Hydrophobic Coating	25 years
84	RDALCC101U	Matte Red	1,720	Lotus 25 Hydrophobic Coating	25 years
85	RDALDV103UN	Matte Red	7,900	Lotus 25 Hydrophobic Coating	25 years
86	RDALDV111UN	Matte Red	6,300	Lotus 25 Hydrophobic Coating	25 years
87	RDALDV112UN	Matte Red	6,300	Lotus 25 Hydrophobic Coating	25 years
88	RDALSP101	Matte Red	2,860	Lotus 25 Hydrophobic Coating	25 years
89	RDALSP102	Matte Red	4,000	Lotus 25 Hydrophobic Coating	25 years
90	RDMYAC101	Matte Red	3,000	Lotus 25 Hydrophobic Coating	25 years

No.	CAT Code	Colour	MRP	Technology	Surface coating Residential Warranty
91	RDMYBC101	Matte Red	4,300	Lotus 25 Hydrophobic Coating	25 years
92	RDMYBC102	Matte Red	4,800	Lotus 25 Hydrophobic Coating	25 years
93	RDMYBM101	Matte Red	10,000	Lotus 25 Hydrophobic Coating	25 years
94	RDMYBM102	Matte Red	14,050	Lotus 25 Hydrophobic Coating	25 years
95	RDMYCC101U	Matte Red	2,310	Lotus 25 Hydrophobic Coating	25 years
96	RDMYDV103UN	Matte Red	8,400	Lotus 25 Hydrophobic Coating	25 years
97	RDMYDV111UN	Matte Red	7,500	Lotus 25 Hydrophobic Coating	25 years
98	RDMYDV112U	Matte Red	4,300	Lotus 25 Hydrophobic Coating	25 years
99	RDMYSP101	Matte Red	3,400	Lotus 25 Hydrophobic Coating	25 years
100	RDMYSP102	Matte Red	5,350	Lotus 25 Hydrophobic Coating	25 years
101	RDAC301	Matte Red	4,400	Lotus 25 Hydrophobic Coating	5 years
102	RDAC302	Matte Red	3,050	Lotus 25 Hydrophobic Coating	5 years
103	RDAC303	Matte Red	2,500	Lotus 25 Hydrophobic Coating	5 years
104	RDAC304	Matte Red	2,500	Lotus 25 Hydrophobic Coating	5 years
105	RDAC305	Matte Red	1,600	Lotus 25 Hydrophobic Coating	5 years
106	RDAC306	Matte Red	2,950	Lotus 25 Hydrophobic Coating	5 years
107	RDBHRF101	Matte Red	5,000	Matt coating technology	3 years
108	RDBHTS101	Matte Red	4,000	Matt coating technology	3 years

# Product Details

No.	CAT Code	Colour	MRP	Technology	Surface coating Residential Warranty
109	RDC232N	Matte Red	2,900	Matt coating technology	3 years
110	RDSA105N	Matte Red	2,850	Lotus 25 Hydrophobic Coating	25 years
111	RDSA106N	Matte Red	4,000	Lotus 25 Hydrophobic Coating	25 years
112	RDSA107N	Matte Red	3,500	Lotus 25 Hydrophobic Coating	25 years
113	RDSA108N	Matte Red	4,600	Lotus 25 Hydrophobic Coating	25 years
114	BS-MR-01	Matte Red	1,300	Injection Moulding Technology	10 years
115	RGMVBM101	Rose Gold	9,100	PVD Coating Technology	12 years
116	RGMVBM102	Rose Gold	12,800	PVD Coating Technology	12 years
117	RGMVAC101	Rose Gold	2,700	PVD Coating Technology	12 years
118	RGMVBC101	Rose Gold	3,850	PVD Coating Technology	12 years
119	RGMVSP101	Rose Gold	3,080	PVD Coating Technology	12 years
120	RGMVCC101U	Rose Gold	2,310	PVD Coating Technology	12 years
121	RGALBM101	Rose Gold	7,800	PVD Coating Technology	12 years
122	RGALBM102	Rose Gold	10,250	PVD Coating Technology	12 years
123	RGALAC101	Rose Gold	2,270	PVD Coating Technology	12 years
124	RGALBC101	Rose Gold	3,200	PVD Coating Technology	12 years
125	RGALSP101	Rose Gold	2,600	PVD Coating Technology	12 years
126	RGALCC101U	Rose Gold	1,760	PVD Coating Technology	12 years

No.	CAT Code	Colour	MRP	Technology	Surface coating Residential Warranty
127	RGALDV111UN	Rose Gold	5,800	PVD Coating Technology	12 years
128	RGALDV112UN	Rose Gold	5,800	PVD Coating Technology	12 years
129	RGALDV103UN	Rose Gold	7,000	PVD Coating Technology	12 years
130	RGMVDV111UN	Rose Gold	7,000	PVD Coating Technology	12 years
131	RGMVDV112UN	Rose Gold	7,000	PVD Coating Technology	12 years
132	RGMVDV103UN	Rose Gold	7,800	PVD Coating Technology	12 years
133	RGALBC102	Rose Gold	3,950	PVD Coating Technology	12 years
134	RGMVBC102	Rose Gold	4,350	PVD Coating Technology	12 years
135	RGALSP102	Rose Gold	3,600	PVD Coating Technology	12 years
136	RGMVSP102	Rose Gold	4,800	PVD Coating Technology	12 years
137	RGBHRF102	Rose Gold	5,400	Electroplating Technology	3 years
138	RGBHTS102	Rose Gold	4,950	Electroplating Technology	3 years
139	RGBHRF101	Rose Gold	4,500	Electroplating Technology	3 years
140	RGBHTS101	Rose Gold	4,400	Electroplating Technology	3 years
141	RGSA108N	Rose Gold	3,900	PVD Coating Technology	12 years
142	RGSA106N	Rose Gold	3,500	PVD Coating Technology	12 years
143	RGSA107N	Rose Gold	3,200	PVD Coating Technology	12 years
144	RGSA105N	Rose Gold	2,500	PVD Coating Technology	12 years

# Product Details

No.	CAT Code	Colour	MRP	Technology	Surface coating Residential Warranty
145	BS-RG-01	Rose Gold	2,800	PVD Coating Technology	10 years
146	RGC232Y	Rose Gold	3,800	PVD Coating Technology	3 years
147	RGAC301	Rose Gold	4,000	PVD Coating Technology	5 years
148	RGAC302	Rose Gold	3,050	PVD Coating Technology	5 years
149	RGAC303	Rose Gold	2,500	PVD Coating Technology	5 years
150	RGAC304	Rose Gold	2,500	PVD Coating Technology	5 years
151	RGAC305	Rose Gold	1,600	PVD Coating Technology	5 years
152	RGAC306	Rose Gold	2,600	PVD Coating Technology	5 years
153	RGSLSM101	Rose Gold	10,000	PVD Coating Technology	12 years

# ISO Certification



After-Sales Service Process  
Certified with ISO 9001:2015  
Standard Quality Management System



\*As per the Asian Paints warranty policy.

Toll-free Number: 1800-266-2079  
Website: bathsense.asianpaints.com