



## ALABASTER PANELS

Lumos

Alabaster panels by Beautiful Homes are decorative acrylic resin panels typically used to adorn walls, providing an elegant and visually appealing touch to interiors. The translucency of alabaster allows light to pass through, creating soft, diffused glow when illuminated from behind. They are used in applications such as feature walls, partitions, lighting fixtures, bar counters and in vanity spaces.

Panel Size : 2440mm x 1220mm

Panel thickness : 6mm



Translucent



Termite proof



Versatile



Elegance & Luxury



Water proof



Easy to Maintain



# LUMOS



APLUMOSMP340

Lumos offers a captivating collection of panels that bring forth a harmonious fusion of abstract artistry and the timeless splendour of marble. These panels have been meticulously crafted with precision to create a transformative impact on your interiors. They go beyond the ordinary and possess the remarkable ability to illuminate your living spaces with a captivating glow.



APLUMOSMP339

*"Offers Abstract expression & marble splendour!"*



APLUMOSMP38



APLUMOSMP336



APLUMOSMP341

Each panel within the Lumos collection radiates a distinctive elegance that enhances the overall ambiance of your home. The abstract artistry adds a touch of creativity and uniqueness, while the marble elements introduce an enduring sense of luxury. Together, they create a visual and sensory experience that is truly captivating and unforgettable, making your living spaces a testament to refined taste and style.

# ALABASTER PANELS

## Lumos

Length : 2440mm

Width : 1220mm

(exception for  
APLUMOSMP343)

Thickness: 6mm

Area per panel : 33 sqft

Material:  
Acrylic Polymer

Application:  
Interior Walls & Ceiling

Warranty:  
5 years

Minimum Order Quantity:  
2 panels

### Installation:

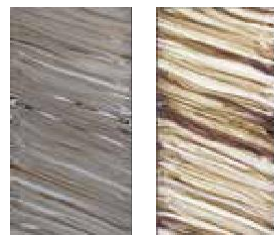
For installation of Alabaster Panels, it is imperative to build a base framework on wall using plywood and introduce the strip lighting within the structure of the frame. Subsequently, the Alabaster wall Panels can fix to the base frame using metal studs or recommended adhesives. Please refer to the detailed installation guidelines for advice on Wall Panel fixing procedure.



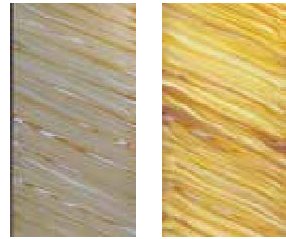
APLUMOSMP334



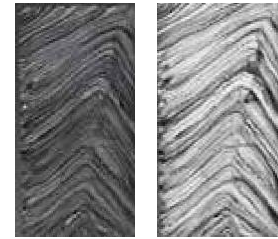
APLUMOSMP335



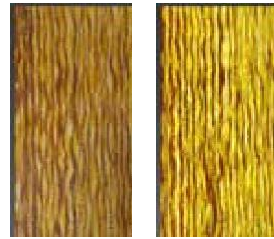
APLUMOSMP336



APLUMOSMP337



APLUMOSMP338



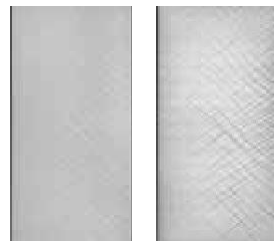
APLUMOSMP339



APLUMOSMP340



APLUMOSMP341



APLUMOSMP342



APLUMOSMP343

## Wall Paneling CARE INSTRUCTIONS

### Charcoal Louvers, Charcoal Panels & Charcoal Moulding

- 1) It is advised to refrain from utilizing abrasive cleansers such as thinner, turpentine, oils, polish, and detergent on the panels, as this may result in scratching the finish and diminishing the panel gloss.
- 2) To prevent any harm to the foil, it is recommended not to employ sharp objects on the surface of the Charcoal louvers and panels.

### Veneer Mosaic Panels

- 1) It is advised to utilize a dry cloth for the upkeep of the wall panels, in order to remove any accumulated dirt. It is strongly advised to refrain from using wet or damp cleaning wipes for this purpose.
- 2) It is recommended to avoid direct contact with water or prolonged exposure to water on the wooden surface.

### Leatherette Foam panels

- 1) Leatherette foam panels should never be cleaned with abrasive cleansers such as thinner, turpentine, oils, polish, or detergent.
- 2) Instead, cleaning should be performed using a lightly wet sponge or cloth with gentle soap. It is important to avoid splashing water directly onto the panel.
- 3) Additionally, sharp objects such as nails, knives, or pencils should not be used on the panel surface, as they can cause damage to the surface.

### Alabaster

- 1) Please refrain from utilizing abrasive cleansers such as thinner, turpentine, oils, polish, and detergent on the panelling, as this will result in scratching the finish and diminishing the panel gloss.
- 2) Kindly employ a soft cloth for the purpose of dusting or cleaning.
- 3) It is advisable to avoid exposing the panelling to direct heat and sunlight.

If you have any ideas or questions, write to us at [customercare@asianpaints.com](mailto:customercare@asianpaints.com) or call us at 1800-209-5678

Connect with us on:



Copyright © 2023 Asian Paints Limited

All rights reserved, no parts of this publication may be reproduced, distributed, or transmitted in any form or by any means, including photocopying, recording, or other electronic or mechanical methods without the prior written permission of the publisher

