

## LEATHERETTE FOAM PANELS

### Orion

Our leatherette clad Foam Panels are characterized by raised textures, and sculpted designs that create a three-dimensional effect on the wall. These panels are typically light weight and designed for simple installation using adhesive and are available in 10 leatherette options. Our foam panels can provide some level of sound insulation, helping to improve the acoustics of a space.

Panel Sizes : 300mm x 300mm, 600mm x 300mm  
Panel thickness : 18-25mm



Easy to Install



Termite proof



Light Weight



Acoustic



3D Textured



Easy to Maintain





# ORION



Elevate your space using the luxurious Orion collection of lavish wall panels. Crafted from sumptuous leatherette foam, these panels bring a touch of glamour to any room. Dive into the myriad of possibilities with Orion and craft a space that's truly distinctive.

APORIONSL417



*"Gives a perfect luxurious look, blended with comfort."*

APORIONSL435



APORIONSL366

Our 3D Foam panels are constructed using top-notch materials. Whether adorning residential or commercial spaces, these panels possess the transformative ability to turn ordinary walls into exquisite focal points, enhancing the ambiance with a touch of sophistication and modernity.



# FOAM PANELS

## Orion

Length : 300mm  
 Width : 300mm  
 Thickness: 18-25mm  
 Area per panel : 1sqft

Material:  
 Leatherette + 3D foam

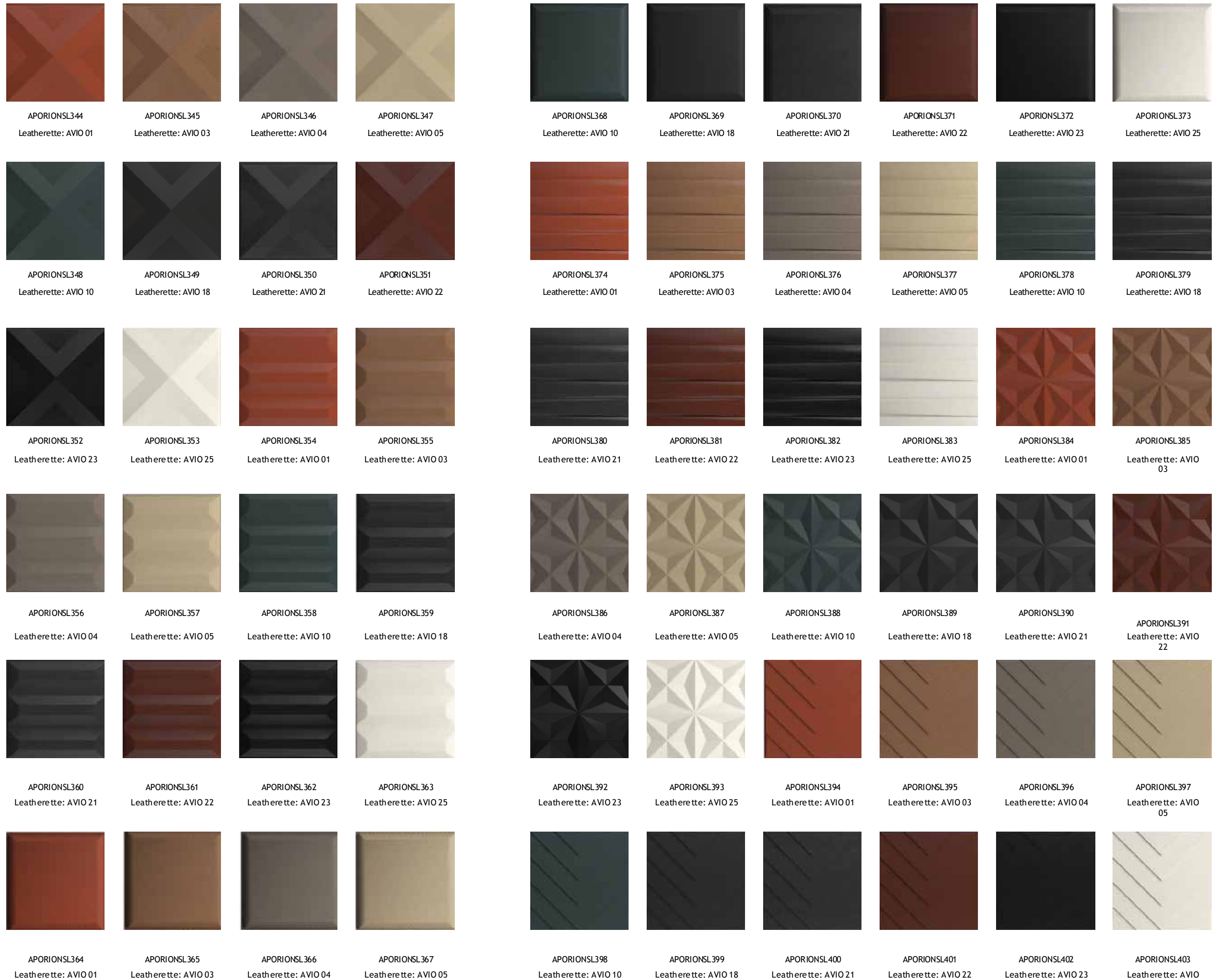
Application:  
 Interior Walls

Warranty:  
 5 years

Minimum Order Quantity:  
 4 panels

### Installation:

These Wall Panels are recommended to be fixed by pasting them on a Plywood/ HDHMR substrate base panel which has been previously nailed onto the surface of the true wall . Please refer to the detailed installation guidelines for advice on wall panel fixing procedure.



# FOAM PANELS

## Orion

Length : 600mm  
 Width : 300mm  
 Thickness: 18-25mm  
 Area per panel : 2 sqft

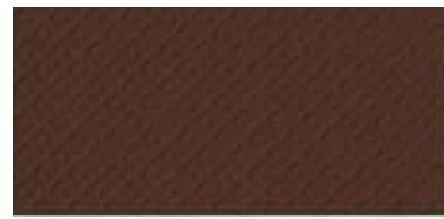
Material:  
 Leatherette + 3D foam

Application:  
 Interior Walls

Warranty:  
 5 years

Minimum Order Quantity:  
 4 panels

Installation:  
 These Wall Panels are recommended to be fixed by pasting them on a Plywood/ HDHMR substrate base panel which has been previously nailed onto the surface of the true wall .Please refer to the detailed installation guidelines for advice on wall panel fixing procedure.



APORIONSL404 Leatherette: AVIO 01



APORIONSL405 Leatherette: AVIO 03



APORIONSL420 Leatherette: AVIO 21



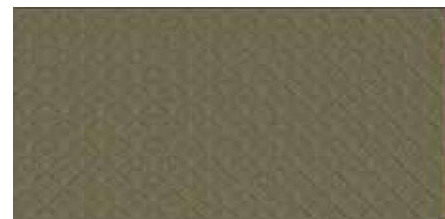
APORIONSL421 Leatherette: AVIO 22



APORIONSL422 Leatherette: AVIO 23



APORIONSL406 Leatherette: AVIO 04



APORIONSL407 Leatherette: AVIO 05



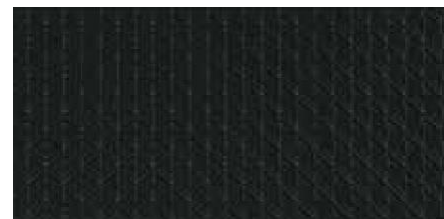
APORIONSL423 Leatherette: AVIO 25



APORIONSL424 Leatherette: AVIO 01



APORIONSL425 Leatherette: AVIO 03



APORIONSL408 Leatherette: AVIO 10



APORIONSL409 Leatherette: AVIO 18



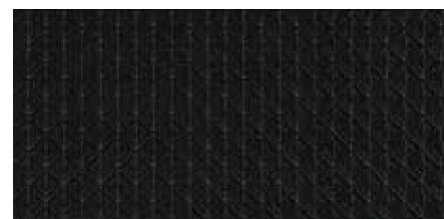
APORIONSL426 Leatherette: AVIO 04



APORIONSL427 Leatherette: AVIO 05



APORIONSL428 Leatherette: AVIO 10



APORIONSL410 Leatherette: AVIO 21



APORIONSL411 Leatherette: AVIO 22



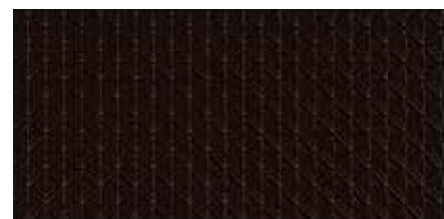
APORIONSL429 Leatherette: AVIO 18



APORIONSL430 Leatherette: AVIO 21



APORIONSL431 Leatherette: AVIO 22



APORIONSL412 Leatherette: AVIO 23



APORIONSL413 Leatherette: AVIO 25



APORIONSL432 Leatherette: AVIO 23



APORIONSL433 Leatherette: AVIO 25



APORIONSL434 Leatherette: AVIO 01



APORIONSL414 Leatherette: AVIO 01



APORIONSL415 Leatherette: AVIO 03



APORIONSL435 Leatherette: AVIO 03



APORIONSL436 Leatherette: AVIO 04



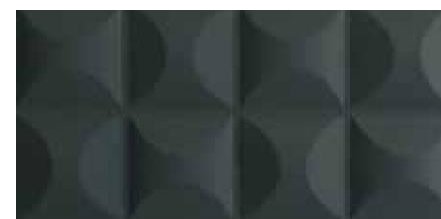
APORIONSL437 Leatherette: AVIO 05



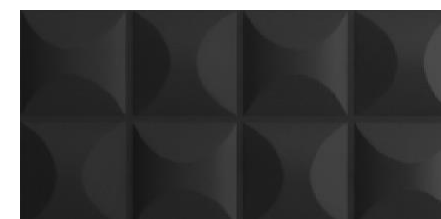
APORIONSL416 Leatherette: AVIO 04



APORIONSL417 Leatherette: AVIO 05



APORIONSL438 Leatherette: AVIO 10



APORIONSL439 Leatherette: AVIO 18



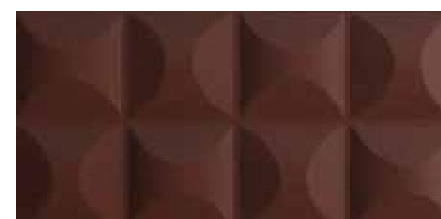
APORIONSL440 Leatherette: AVIO 21



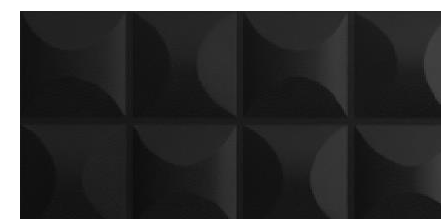
APORIONSL418 Leatherette: AVIO 10



APORIONSL419 Leatherette: AVIO 18



APORIONSL441 Leatherette: AVIO 22



APORIONSL442 Leatherette: AVIO 23



APORIONSL443 Leatherette: AVIO 25



If you have any ideas or questions, write to us at [customercare@asianpaints.com](mailto:customercare@asianpaints.com) or call us at 1800-209-5678

Connect with us on:



Copyright © 2023 Asian Paints Limited

All rights reserved, no parts of this publication may be reproduced, distributed, or transmitted in any form or by any means, including photocopying, recording, or other electronic or mechanical methods without the prior written permission of the publisher

